

**BPI Antibody**  
**Rabbit mAb**  
**Catalog # AP90695**

## Specification

---

### BPI Antibody - Product Information

Application	WB, FC, ICC
Primary Accession	<a href="#">P17213</a>
Clonality	Monoclonal
<b>Other Names</b>	
rBPI; BPIFD1; CAP 57; BPI; Bactericidal permeability-increasing protein;	
Isotype	Rabbit IgG
Host	Rabbit
Calculated MW	53900 Da

### BPI Antibody - Additional Information

Purification	Affinity-chromatography
Immunogen	A synthesized peptide derived from human BPI
Description	The cytotoxic action of BPI is limited to many species of Gram-negative bacteria; this specificity may be explained by a strong affinity of the very basic N-terminal half for the negatively charged lipopolysaccharides that are unique to the Gram-negative bacterial outer envelope. Has antibacterial activity against the Gram-negative bacterium <i>P.aeruginosa</i> , this activity is inhibited by LPS from <i>P.aeruginosa</i> .
Storage Condition and Buffer	Rabbit IgG in phosphate buffered saline , pH 7.4, 150mM NaCl, 0.02% sodium azide and 50% glycerol. Store at +4°C short term. Store at -20°C long term. Avoid freeze / thaw cycle.

### BPI Antibody - Protein Information

**Name** BPI

#### Function

The cytotoxic action of BPI is limited to many species of Gram-negative bacteria; this specificity may be explained by a strong affinity of the very basic N-terminal half for the negatively charged lipopolysaccharides that are unique to the Gram-negative bacterial outer envelope. Has antibacterial activity against the Gram-negative bacterium *P.aeruginosa*, this activity is inhibited by LPS from *P.aeruginosa*.

**Cellular Location**

Secreted. Cytoplasmic granule membrane Note=Membrane-associated in polymorphonuclear Leukocytes (PMN) granules.

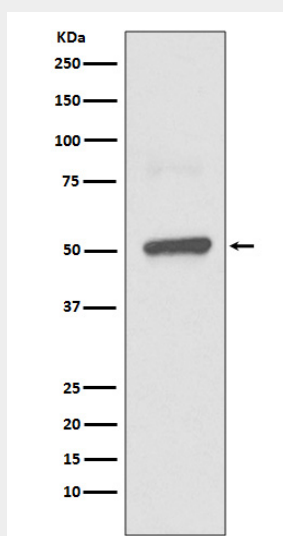
**Tissue Location**

Restricted to cells of the myeloid series.

**BPI Antibody - Protocols**

Provided below are standard protocols that you may find useful for product applications.

- [Western Blot](#)
- [Blocking Peptides](#)
- [Dot Blot](#)
- [Immunohistochemistry](#)
- [Immunofluorescence](#)
- [Immunoprecipitation](#)
- [Flow Cytometry](#)
- [Cell Culture](#)

**BPI Antibody - Images**

Western blot analysis of BPI expression in THP1 lysate.