

ABCF1 Antibody
Rabbit mAb
Catalog # AP90706**Specification**

ABCF1 Antibody - Product Information

Application	WB, IHC, ICC
Primary Accession	Q8NE71
Reactivity	Rat
Clonality	Monoclonal
Other Names	
ABC27; ABC50; ABCF1; ATP-binding cassette 50; ATP-binding cassette 50 (TNF-alpha stimulated); TNF-alpha-stimulated ABC protein;	
Isotype	Rabbit IgG
Host	Rabbit
Calculated MW	95926 Da

ABCF1 Antibody - Additional Information

Purification	Affinity-chromatography
Immunogen	A synthesized peptide derived from human ABCF1
Description	ABCF1 May function in mRNA translation. Belongs to the ABC transporter superfamily. ABCF family. EF3 subfamily. Induced by TNF (in cultured synoviocytes). Interacts with eukaryotic initiation factor 2 (eIF2). Associates with the ribosomes. 2 isoforms of the human protein are produced by alternative splicing. Note: This description may include information from UniProtKB.
Storage Condition and Buffer	Rabbit IgG in phosphate buffered saline , pH 7.4, 150mM NaCl, 0.02% sodium azide and 50% glycerol. Store at +4°C short term. Store at -20°C long term. Avoid freeze / thaw cycle.

ABCF1 Antibody - Protein Information**Name** ABCF1**Synonyms** ABC50**Function**

Isoform 2 is required for efficient Cap- and IRES-mediated mRNA translation initiation. Isoform 2 is not involved in the ribosome biogenesis.

Cellular Location

[Isoform 2]: Cytoplasm. Nucleus, nucleoplasm. Nucleus envelope

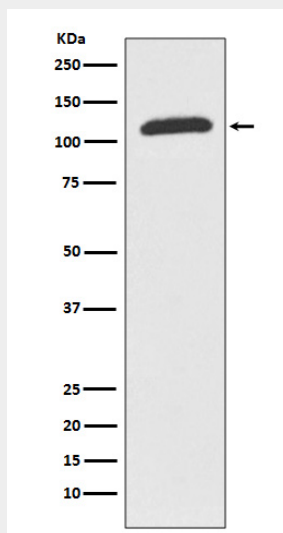
Tissue Location

Ubiquitous..

ABCF1 Antibody - Protocols

Provided below are standard protocols that you may find useful for product applications.

- [Western Blot](#)
- [Blocking Peptides](#)
- [Dot Blot](#)
- [Immunohistochemistry](#)
- [Immunofluorescence](#)
- [Immunoprecipitation](#)
- [Flow Cytometry](#)
- [Cell Culture](#)

ABCF1 Antibody - Images

Western blot analysis of ABCF1 expression in K562 cell lysate.