

Mast Cell Tryptase Antibody
Rabbit mAb
Catalog # AP90719**Specification**

Mast Cell Tryptase Antibody - Product Information

Application	WB, IHC, IP
Primary Accession	Q15661
Reactivity	Rat
Clonality	Monoclonal
Other Names	
TPS1; TPS2; TPSAB1; TPSB1; MCP 7 ; Mast cell protease 7; Tryptase alpha 1;	
Isotype	Rabbit IgG
Host	Rabbit
Calculated MW	30515 Da

Mast Cell Tryptase Antibody - Additional Information

Dilution	WB~~1:1000 IHC~~1:100~500 IP~~N/A
Purification	Affinity-chromatography
Immunogen	A synthesized peptide derived from human Mast Cell Tryptase
Description	Tryptases comprise a family of trypsin-like serine proteases, the peptidase family S1. Tryptases are enzymatically active only as heparin-stabilized tetramers, and they are resistant to all known endogenous proteinase inhibitors. Several tryptase genes are clustered on chromosome 16p13.3. These genes are characterized by several distinct features.
Storage Condition and Buffer	Rabbit IgG in phosphate buffered saline , pH 7.4, 150mM NaCl, 0.02% sodium azide and 50% glycerol. Store at +4°C short term. Store at -20°C long term. Avoid freeze / thaw cycle.

Mast Cell Tryptase Antibody - Protein Information**Name** TPSAB1**Synonyms** TPS1, TPS2, TPSB1**Function**

Tryptase is the major neutral protease present in mast cells and is secreted upon the coupled activation-degranulation response of this cell type. May play a role in innate immunity. Isoform 2

cleaves large substrates, such as fibronectin, more efficiently than isoform 1, but seems less efficient toward small substrates (PubMed:18854315).

Cellular Location

Secreted. Note=Released from the secretory granules upon mast cell activation.

Tissue Location

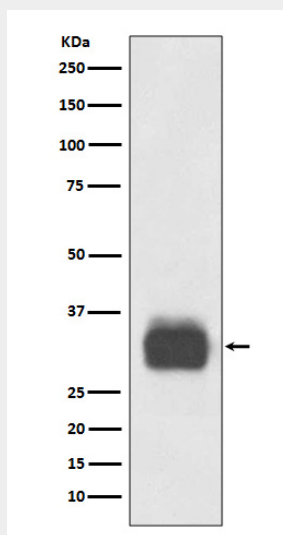
Isoform 1 and isoform 2 are expressed in lung, stomach, spleen, heart and skin; in these tissues, isoform 1 is predominant. Isoform 2 is expressed in aorta, spleen, and breast tumor, with highest levels in the endothelial cells of some blood vessels surrounding the aorta, as well as those surrounding the tumor and low levels, if any, in mast cells (at protein level)

Mast Cell Tryptase Antibody - Protocols

Provided below are standard protocols that you may find useful for product applications.

- [Western Blot](#)
- [Blocking Peptides](#)
- [Dot Blot](#)
- [Immunohistochemistry](#)
- [Immunofluorescence](#)
- [Immunoprecipitation](#)
- [Flow Cytometry](#)
- [Cell Culture](#)

Mast Cell Tryptase Antibody - Images



Western blot analysis of Mast Cell Tryptase expression in Human tonsil lysate.