

**ADIPOR1 Antibody**  
**Rabbit mAb**  
**Catalog # AP90730****Specification****ADIPOR1 Antibody - Product Information**

Application	WB, IHC, FC, ICC
Primary Accession	<a href="#">Q96A54</a>
Reactivity	Rat
Clonality	Monoclonal
<b>Other Names</b>	
Adiponectin receptor protein 1; Progestin and adipoQ receptor family member I ; CGI-45; PAQR1; ADIPOR1;	
Isotype	Rabbit IgG
Host	Rabbit
Calculated MW	42616 Da

**ADIPOR1 Antibody - Additional Information**

Dilution	WB~~1:1000 IHC~~1:100~500 FC~~1:10~50 ICC~~N/A
Purification	Affinity-chromatography
Immunogen	A synthesized peptide derived from human ADIPOR1
Description	Regulate fatty acid oxidation and the uptake of glucose by adiponectin. Each receptor activates a unique set of signaling molecules including AMPK, p38 MAPK and PPAR?. AdipoR1 has a high-affinity for globular adiponectin and low-affinity for full-length adiponectin, while AdipoR2 has an intermediate affinity for both forms.
Storage Condition and Buffer	Rabbit IgG in phosphate buffered saline , pH 7.4, 150mM NaCl, 0.02% sodium azide and 50% glycerol. Store at +4°C short term. Store at -20°C long term. Avoid freeze / thaw cycle.

**ADIPOR1 Antibody - Protein Information****Name** ADIPOR1 ([HGNC:24040](#))**Function**

Receptor for ADIPOQ, an essential hormone secreted by adipocytes that regulates glucose and lipid metabolism (PubMed:<a href="http://www.uniprot.org/citations/12802337" target="\_blank">12802337</a>, PubMed:<a href="http://www.uniprot.org/citations/25855295"

target="\_blank">25855295</a>). Required for normal glucose and fat homeostasis and for maintaining a normal body weight. ADIPOQ-binding activates a signaling cascade that leads to increased AMPK activity, and ultimately to increased fatty acid oxidation, increased glucose uptake and decreased gluconeogenesis. Has high affinity for globular adiponectin and low affinity for full-length adiponectin (By similarity).

#### Cellular Location

Cell membrane; Multi-pass membrane protein Note=Localized to the cell membrane and intracellular organelles

#### Tissue Location

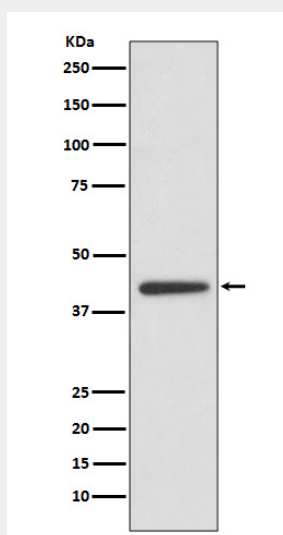
Widely expressed (PubMed:16044242). Highly expressed in heart and skeletal muscle (PubMed:12802337). Expressed at intermediate level in brain, spleen, kidney, liver, placenta, lung and peripheral blood leukocytes (PubMed:12802337). Weakly expressed in colon, thymus and small intestine (PubMed:12802337)

### ADIPOR1 Antibody - Protocols

Provided below are standard protocols that you may find useful for product applications.

- [Western Blot](#)
- [Blocking Peptides](#)
- [Dot Blot](#)
- [Immunohistochemistry](#)
- [Immunofluorescence](#)
- [Immunoprecipitation](#)
- [Flow Cytometry](#)
- [Cell Culture](#)

### ADIPOR1 Antibody - Images



Western blot analysis of ADIPOR1 expression in Human heart lysate.