

Cytochrome C Antibody
Rabbit mAb
Catalog # AP90735**Specification**

Cytochrome C Antibody - Product Information

Application	WB, IHC, ICC, IP
Primary Accession	P99999
Reactivity	Rat
Clonality	Monoclonal
Other Names	
CYC; CYCS; Cytochrome c; HCS; THC4;	
Isotype	Rabbit IgG
Host	Rabbit
Calculated MW	11749 Da

Cytochrome C Antibody - Additional Information

Dilution	WB~~1:1000 IHC~~1:100~500 ICC~~N/A IP~~N/A
Purification	Affinity-chromatography
Immunogen	A synthesized peptide derived from human Cytochrome C
Description	Cytochrome C is a well conserved electron-transport protein and is part of the respiratory chain localized to mitochondrial intermembrane space. Plays a role in apoptosis. Suppression of the anti-apoptotic members or activation of the pro-apoptotic members of the Bcl-2 family leads to altered mitochondrial membrane permeability resulting in release of cytochrome C into the cytosol.
Storage Condition and Buffer	Rabbit IgG in phosphate buffered saline , pH 7.4, 150mM NaCl, 0.02% sodium azide and 50% glycerol. Store at +4°C short term. Store at -20°C long term. Avoid freeze / thaw cycle.

Cytochrome C Antibody - Protein Information**Name** CYCS**Synonyms** CYC**Function**

Electron carrier protein. The oxidized form of the cytochrome c heme group can accept an electron from the heme group of the cytochrome c1 subunit of cytochrome reductase. Cytochrome c then transfers this electron to the cytochrome oxidase complex, the final protein carrier in the mitochondrial electron-transport chain.

Cellular Location

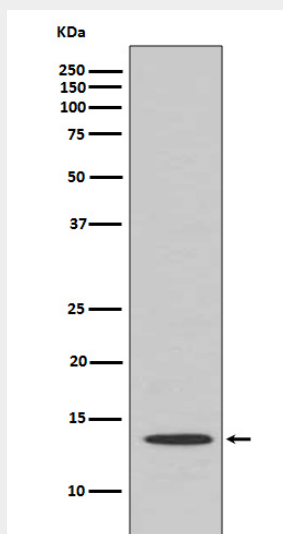
Mitochondrion intermembrane space. Note=Loosely associated with the inner membrane

Cytochrome C Antibody - Protocols

Provided below are standard protocols that you may find useful for product applications.

- [Western Blot](#)
- [Blocking Peptides](#)
- [Dot Blot](#)
- [Immunohistochemistry](#)
- [Immunofluorescence](#)
- [Immunoprecipitation](#)
- [Flow Cytometry](#)
- [Cell Culture](#)

Cytochrome C Antibody - Images



Western blot analysis of Cytochrome C expression in Human kidney lysate.