

MUC16 Antibody
Rabbit mAb
Catalog # AP90739**Specification**

MUC16 Antibody - Product Information

Application	WB, FC, ICC
Primary Accession	Q8WXI7
Clonality	Monoclonal
Other Names	
Cancer antigen 125; CA125; CA125 ovarian cancer; MUC 16; Mucin16; Ovarian cancer related tumor marker CA125;	
Isotype	Rabbit IgG
Host	Rabbit
Calculated MW	1519175 Da

MUC16 Antibody - Additional Information

Dilution	WB~~1:1000 FC~~1:10~50 ICC~~N/A
Purification	Affinity-chromatography
Immunogen	A synthesized peptide derived from human MUC16
Description	The mucins are a family of highly glycosylated, secreted proteins with a basic structure consisting of a variable number of tandem repeats (VNTRs). Thought to provide a protective, lubricating barrier against particles and infectious agents at mucosal surfaces.
Storage Condition and Buffer	Rabbit IgG in phosphate buffered saline , pH 7.4, 150mM NaCl, 0.02% sodium azide and 50% glycerol. Store at +4°C short term. Store at -20°C long term. Avoid freeze / thaw cycle.

MUC16 Antibody - Protein Information**Name** MUC16 ([HGNC:15582](#))**Function**

Thought to provide a protective, lubricating barrier against particles and infectious agents at mucosal surfaces.

Cellular Location

Cell membrane; Single-pass type I membrane protein. Secreted, extracellular space. Note=May be liberated into the extracellular space following the phosphorylation of the intracellular C-terminus

which induces the proteolytic cleavage and liberation of the extracellular domain

Tissue Location

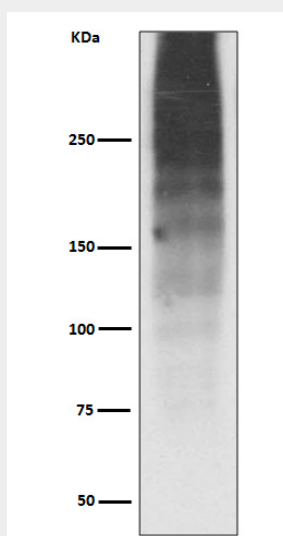
Expressed in corneal and conjunctival epithelia (at protein level). Overexpressed in ovarian carcinomas and ovarian low malignant potential (LMP) tumors as compared to the expression in normal ovarian tissue and ovarian adenomas

MUC16 Antibody - Protocols

Provided below are standard protocols that you may find useful for product applications.

- [Western Blot](#)
- [Blocking Peptides](#)
- [Dot Blot](#)
- [Immunohistochemistry](#)
- [Immunofluorescence](#)
- [Immunoprecipitation](#)
- [Flow Cytometry](#)
- [Cell Culture](#)

MUC16 Antibody - Images



Western blot analysis of MUC16 expression in Human ovary cancer lysate.