

Cytokeratin 6 Antibody
Rabbit mAb
Catalog # AP90742**Specification****Cytokeratin 6 Antibody - Product Information**

Application	WB, IHC, ICC
Primary Accession	P02538
Clonality	Monoclonal
Other Names	
CK 6A; CK 6B; CK 6C; CK 6D; CK 6E; CK-6C; CK-6E; Cytokeratin 6a; Cytokeratin 6B; Cytokeratin 6C; Cytokeratin 6D; Cytokeratin 6E; Cytokeratin-6C; Cytokeratin-6E; K6a keratin; K6b keratin; K6C; K6c keratin; K6d keratin; K6e keratin; Keratin K6h;	
Isotype	Rabbit IgG
Host	Rabbit
Calculated MW	60045 Da

Cytokeratin 6 Antibody - Additional Information

Dilution	WB~~1:1000 IHC~~1:100~500 ICC~~N/A
Purification	Affinity-chromatography
Immunogen	A synthesized peptide derived from human Cytokeratin 6
Description	Keratins (cytokeratins) are intermediate filament proteins that are mainly expressed in epithelial cells. Involved in the activation of follicular keratinocytes after wounding, while it does not play a major role in keratinocyte proliferation or migration. Participates in the regulation of epithelial migration by inhibiting the activity of SRC during wound repair.
Storage Condition and Buffer	Rabbit IgG in phosphate buffered saline , pH 7.4, 150mM NaCl, 0.02% sodium azide and 50% glycerol. Store at +4°C short term. Store at -20°C long term. Avoid freeze / thaw cycle.

Cytokeratin 6 Antibody - Protein Information**Name** KRT6A**Synonyms** K6A, KRT6D**Function**

Epidermis-specific type I keratin involved in wound healing. Involved in the activation of follicular

keratinocytes after wounding, while it does not play a major role in keratinocyte proliferation or migration. Participates in the regulation of epithelial migration by inhibiting the activity of SRC during wound repair.

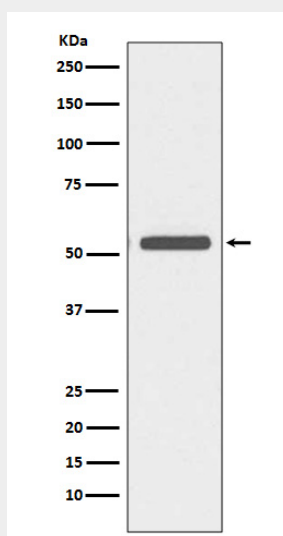
Tissue Location

Expressed in the corneal epithelium (at protein level).

Cytokeratin 6 Antibody - Protocols

Provided below are standard protocols that you may find useful for product applications.

- [Western Blot](#)
- [Blocking Peptides](#)
- [Dot Blot](#)
- [Immunohistochemistry](#)
- [Immunofluorescence](#)
- [Immunoprecipitation](#)
- [Flow Cytometry](#)
- [Cell Culture](#)

Cytokeratin 6 Antibody - Images

Western blot analysis of Cytokeratin 6 expression in A431 cell lysate.