

**Phospho-YAP1 (S127) Antibody**  
**Rabbit mAb**  
**Catalog # AP90744****Specification**

---

**Phospho-YAP1 (S127) Antibody - Product Information**

Application	WB, IHC
Primary Accession	<a href="#">P46937</a>
Reactivity	Rat
Clonality	Monoclonal
<b>Other Names</b>	
65 kDa Yes associated protein; YAP; YAp 1; YAP2; YAP 65;YKI; Yorkie homolog;	
Isotype	Rabbit IgG
Host	Rabbit
Calculated MW	54462 Da

**Phospho-YAP1 (S127) Antibody - Additional Information**

Dilution	WB~~1:1000 IHC~~1:100~500
Purification	Affinity-chromatography
Immunogen	A synthesized peptide derived from human YAP1
Description	YAP (Yes-associated protein, YAP65) was identified based on its ability to associate with the SH3 domain of Yes. Transcriptional regulator which can act both as a coactivator and a corepressor and is the critical downstream regulatory target in the Hippo signaling pathway that plays a pivotal role in organ size control and tumor suppression by restricting proliferation and promoting apoptosis.
Storage Condition and Buffer	Rabbit IgG in phosphate buffered saline , pH 7.4, 150mM NaCl, 0.02% sodium azide and 50% glycerol. Store at +4°C short term. Store at -20°C long term. Avoid freeze / thaw cycle.

**Phospho-YAP1 (S127) Antibody - Protein Information****Name** YAP1 ([HGNC:16262](#))**Synonyms** YAP65**Function**

Transcriptional regulator with dual roles as a coactivator and corepressor. Critical downstream regulatory target in the Hippo signaling pathway, crucial for organ size control and tumor

suppression by restricting proliferation and promoting apoptosis (PubMed:<a href="http://www.uniprot.org/citations/17974916" target="\_blank">17974916</a>, PubMed:<a href="http://www.uniprot.org/citations/18280240" target="\_blank">18280240</a>, PubMed:<a href="http://www.uniprot.org/citations/18579750" target="\_blank">18579750</a>, PubMed:<a href="http://www.uniprot.org/citations/21364637" target="\_blank">21364637</a>, PubMed:<a href="http://www.uniprot.org/citations/30447097" target="\_blank">30447097</a>). The Hippo signaling pathway core involves a kinase cascade featuring STK3/MST2 and STK4/MST1, along with its regulatory partner SAV1, which phosphorylates and activates LATS1/2 in complex with their regulatory protein, MOB1. This activation leads to the phosphorylation and inactivation of the YAP1 oncoprotein and WWTR1/TAZ (PubMed:<a href="http://www.uniprot.org/citations/18158288" target="\_blank">18158288</a>). Phosphorylation of YAP1 by LATS1/2 prevents its nuclear translocation, thereby regulating the expression of its target genes (PubMed:<a href="http://www.uniprot.org/citations/18158288" target="\_blank">18158288</a>, PubMed:<a href="http://www.uniprot.org/citations/26598551" target="\_blank">26598551</a>, PubMed:<a href="http://www.uniprot.org/citations/34404733" target="\_blank">34404733</a>). The transcriptional regulation of gene expression requires TEAD transcription factors and modulates cell growth, anchorage-independent growth, and induction of epithelial- mesenchymal transition (EMT) (PubMed:<a href="http://www.uniprot.org/citations/18579750" target="\_blank">18579750</a>). Plays a key role in tissue tension and 3D tissue shape by regulating the cortical actomyosin network, acting via ARHGAP18, a Rho GTPase activating protein that suppresses F-actin polymerization (PubMed:<a href="http://www.uniprot.org/citations/25778702" target="\_blank">25778702</a>). It also suppresses ciliogenesis by acting as a transcriptional corepressor of TEAD4 target genes AURKA and PLK1 (PubMed:<a href="http://www.uniprot.org/citations/25849865" target="\_blank">25849865</a>). In conjunction with WWTR1, regulates TGF $\beta$ 1-dependent SMAD2 and SMAD3 nuclear accumulation (By similarity). Synergizes with WBP2 to enhance PGR activity (PubMed:<a href="http://www.uniprot.org/citations/16772533" target="\_blank">16772533</a>).

### Cellular Location

Cytoplasm. Nucleus. Cell junction, tight junction {ECO:0000250|UniProtKB:A0A8C0NGY6}. Cell membrane. Note=Both phosphorylation and cell density can regulate its subcellular localization (PubMed:18158288, PubMed:20048001). Phosphorylation sequesters it in the cytoplasm by inhibiting its translocation into the nucleus (PubMed:18158288, PubMed:20048001, PubMed:34404733). At low density, predominantly nuclear and is translocated to the cytoplasm at high density (PubMed:18158288, PubMed:20048001, PubMed:25849865). PTPN14 induces translocation from the nucleus to the cytoplasm (PubMed:22525271). In the nucleus, phosphorylation by PRP4K induces nuclear exclusion (PubMed:29695716). Localized mainly to the nucleus in the early stages of embryo development with expression becoming evident in the cytoplasm at the blastocyst and epiblast stages (By similarity) Localizes to the cytoplasm and tight junctions following interaction with AMOT isoform 1 (PubMed:21205866). Localizes to tight junctions following interaction with AMOTL2 (By similarity). Translocates to the nucleus in the presence of SNAIL1 (By similarity). Found at the cell membrane in keratinocytes in response to mechanical strain (PubMed:31835537). {ECO:0000250|UniProtKB:A0A8C0NGY6, ECO:0000250|UniProtKB:P46938, ECO:0000269|PubMed:18158288, ECO:0000269|PubMed:20048001, ECO:0000269|PubMed:21205866, ECO:0000269|PubMed:22525271, ECO:0000269|PubMed:25849865, ECO:0000269|PubMed:29695716, ECO:0000269|PubMed:31835537, ECO:0000269|PubMed:34404733}

### Tissue Location

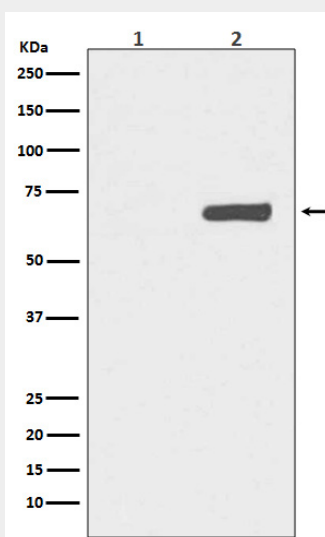
Increased expression seen in some liver and prostate cancers. Isoforms lacking the transactivation domain found in striatal neurons of patients with Huntington disease (at protein level).

### Phospho-YAP1 (S127) Antibody - Protocols

Provided below are standard protocols that you may find useful for product applications.

- [Western Blot](#)
- [Blocking Peptides](#)
- [Dot Blot](#)
- [Immunohistochemistry](#)
- [Immunofluorescence](#)
- [Immunoprecipitation](#)
- [Flow Cytometry](#)
- [Cell Culture](#)

#### **Phospho-YAP1 (S127) Antibody - Images**



Western blot analysis of Phospho-YAP1 (S127) expression in (1) HeLa cell lysate; (2) HeLa cell lysate treated with FBS+calyculin A.