

CD38 Antibody
Rabbit mAb
Catalog # AP90746**Specification****CD38 Antibody - Product Information**

Application	WB, IHC
Primary Accession	P28907
Clonality	Monoclonal
Other Names	
CD38 antigen; ADP ribosyl cyclase 1; Cd38-rs1; ADP ribosyl cyclase; ADP ribosyl cyclase/cyclic ADP-ribose hydrolase; ADP-ribosyl cyclase 1; cADPr hydrolase 1; CD38 antigen (p45); CD38 molecule;	
Isotype	Rabbit IgG
Host	Rabbit
Calculated MW	34328 Da

CD38 Antibody - Additional Information

Dilution	WB~~1:1000 IHC~~1:100~500
Purification	Affinity-chromatography
Immunogen	A synthesized peptide derived from human CD38
Description	CD38 is a transmembrane protein involved in several important biological processes, including immune response, insulin secretion, and social behavior. Synthesizes cyclic ADP-ribose, a second messenger for glucose-induced insulin secretion. Also has cADPr hydrolase activity. Also moonlights as a receptor in cells of the immune system.
Storage Condition and Buffer	Rabbit IgG in phosphate buffered saline , pH 7.4, 150mM NaCl, 0.02% sodium azide and 50% glycerol. Store at +4°C short term. Store at -20°C long term. Avoid freeze / thaw cycle.

CD38 Antibody - Protein Information**Name** CD38**Function**

Synthesizes cyclic ADP-ribose (cADPR), a second messenger for glucose-induced insulin secretion (PubMed:7961800, PubMed:8253715). Synthesizes the Ca(2+) mobilizer nicotinate-adenine dinucleotide phosphate, NAADP(+), from

2'-phospho-cADPR and nicotinic acid, as well as from NADP(+) and nicotinic acid. At both pH 5.0 and pH 7.4 preferentially transforms 2'-phospho-cADPR into NAADP(+), while preferentially cleaving NADP(+) to cADPR and ADPRP rather than into NADDP(+) (PubMed:16690024). Has cADPR hydrolase activity (PubMed:7961800, PubMed:8253715).

Cellular Location

Cell surface. Membrane; Single-pass type II membrane protein

Tissue Location

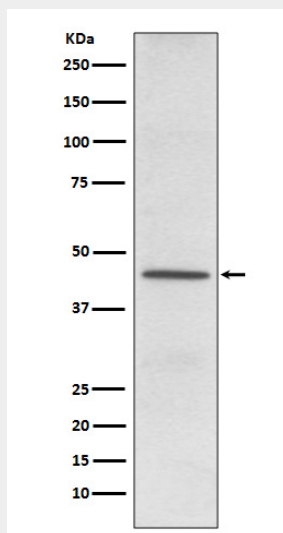
Expressed at high levels in pancreas, liver, kidney, brain, testis, ovary, placenta, malignant lymphoma and neuroblastoma.

CD38 Antibody - Protocols

Provided below are standard protocols that you may find useful for product applications.

- [Western Blot](#)
- [Blocking Peptides](#)
- [Dot Blot](#)
- [Immunohistochemistry](#)
- [Immunofluorescence](#)
- [Immunoprecipitation](#)
- [Flow Cytometry](#)
- [Cell Culture](#)

CD38 Antibody - Images



Western blot analysis of CD38 expression in HeLa cell lysate.