

CD68 Antibody
Rabbit mAb
Catalog # AP90757**Specification**

CD68 Antibody - Product Information

Application	WB
Primary Accession	P34810
Reactivity	Rat
Clonality	Monoclonal
Other Names	
CD68 antigen; CD68 molecule; Gp110; LAMP4; Macrophage antigen CD68 (microsialin); Macrosialin; SCARD1; Scavenger receptor class D member 1;	
Isotype	Rabbit IgG
Host	Rabbit
Calculated MW	37408 Da

CD68 Antibody - Additional Information

Dilution	WB~~1:1000
Purification	Affinity-chromatography
Immunogen	A synthesized peptide derived from human CD68
Description	CD68 belongs to a family of acidic, highly glycosylated lysosomal glycoproteins (LGPs) that includes lamp-1 and lamp-2. Play a role in phagocytic activities of tissue macrophages, both in intracellular lysosomal metabolism and extracellular cell-cell and cell-pathogen interactions.
Storage Condition and Buffer	Rabbit IgG in phosphate buffered saline , pH 7.4, 150mM NaCl, 0.02% sodium azide and 50% glycerol. Store at +4°C short term. Store at -20°C long term. Avoid freeze / thaw cycle.

CD68 Antibody - Protein Information**Name** CD68**Function**

Could play a role in phagocytic activities of tissue macrophages, both in intracellular lysosomal metabolism and extracellular cell-cell and cell-pathogen interactions. Binds to tissue- and organ-specific lectins or selectins, allowing homing of macrophage subsets to particular sites. Rapid recirculation of CD68 from endosomes and lysosomes to the plasma membrane may allow macrophages to crawl over selectin-bearing substrates or other cells.

Cellular Location

[Isoform Short]: Cell membrane; Single-pass type I membrane protein

Tissue Location

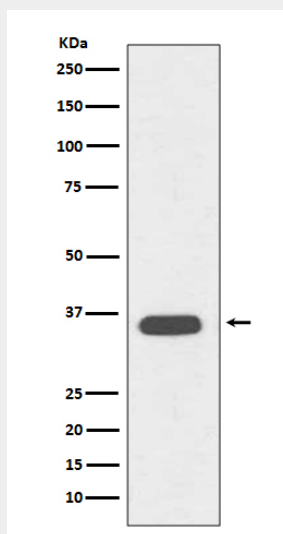
Highly expressed by blood monocytes and tissue macrophages. Also expressed in lymphocytes, fibroblasts and endothelial cells. Expressed in many tumor cell lines which could allow them to attach to selectins on vascular endothelium, facilitating their dissemination to secondary sites.

CD68 Antibody - Protocols

Provided below are standard protocols that you may find useful for product applications.

- [Western Blot](#)
- [Blocking Peptides](#)
- [Dot Blot](#)
- [Immunohistochemistry](#)
- [Immunofluorescence](#)
- [Immunoprecipitation](#)
- [Flow Cytometry](#)
- [Cell Culture](#)

CD68 Antibody - Images



Western blot analysis of CD68 expression in Jurkat cell lysate.