

Cytokeratin 18 Antibody
Rabbit mAb
Catalog # AP90758**Specification**

Cytokeratin 18 Antibody - Product Information

| | |
|-------------------|------------------------|
| Application | WB, IHC, FC, ICC |
| Primary Accession | P05783 |
| Reactivity | Rat |
| Clonality | Monoclonal |

Other Names

type I cytoskeletal 18; Cell proliferation-inducing gene 46 protein; Cytokeratin-18; Keratin-18; KRT18; CYK18; PIG46; KRT 18; CK18; Keratin 18;

| | |
|---------------|------------|
| Isotype | Rabbit IgG |
| Host | Rabbit |
| Calculated MW | 48058 Da |

Cytokeratin 18 Antibody - Additional Information

| | |
|------------------------------|---|
| Dilution | WB~~1:1000 IHC~~1:100~500 FC~~1:10~50 ICC~~N/A |
| Purification | Affinity-chromatography |
| Immunogen | A synthesized peptide derived from human Cytokeratin 18 |
| Description | Involved in the uptake of thrombin-antithrombin complexes by hepatic cells (By similarity). Together with KRT8, is involved in interleukin-6 (IL-6)-mediated barrier protection. |
| Storage Condition and Buffer | Rabbit IgG in phosphate buffered saline , pH 7.4, 150mM NaCl, 0.02% sodium azide and 50% glycerol. Store at +4°C short term. Store at -20°C long term. Avoid freeze / thaw cycle. |

Cytokeratin 18 Antibody - Protein Information**Name** KRT18**Synonyms** CYK18**Function**

Involved in the uptake of thrombin-antithrombin complexes by hepatic cells (By similarity). When phosphorylated, plays a role in filament reorganization. Involved in the delivery of mutated CFTR to the plasma membrane. Together with KRT8, is involved in interleukin-6 (IL-6)-mediated barrier protection.

Cellular Location

Nucleus matrix {ECO:0000250|UniProtKB:Q5BJY9}. Cytoplasm, perinuclear region. Nucleus, nucleolus. Cytoplasm {ECO:0000250|UniProtKB:Q5BJY9}

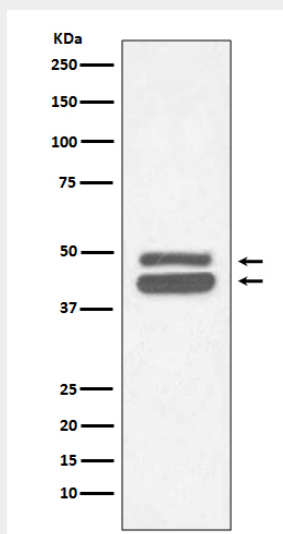
Tissue Location

Expressed in colon, placenta, liver and very weakly in exocervix. Increased expression observed in lymph nodes of breast carcinoma.

Cytokeratin 18 Antibody - Protocols

Provided below are standard protocols that you may find useful for product applications.

- [Western Blot](#)
- [Blocking Peptides](#)
- [Dot Blot](#)
- [Immunohistochemistry](#)
- [Immunofluorescence](#)
- [Immunoprecipitation](#)
- [Flow Cytometry](#)
- [Cell Culture](#)

Cytokeratin 18 Antibody - Images

Western blot analysis of Cytokeratin 18 expression in HeLa cell lysate.