

EpCAM Antibody
Rabbit mAb
Catalog # AP90759

Specification

EpCAM Antibody - Product Information

Application	WB, IHC
Primary Accession	P16422
Clonality	Monoclonal
Other Names	
Epithelial cell adhesion molecule; Ep-CAM; CO17A; CD326; Cell surface glycoprotein Trop-1; EGP; Epithelial glycoprotein 314; EGP314; hEGP314; KS 1/4 antigen; KSA;	
Isotype	Rabbit IgG
Host	Rabbit
Calculated MW	34932 Da

EpCAM Antibody - Additional Information

Dilution	WB~~1:1000 IHC~~1:100~500
Purification	Affinity-chromatography
Immunogen	A synthesized peptide derived from human EpCAM
Description	Epithelial cell adhesion and activating molecule (EpCAM/CD326) is a transmembrane glycoprotein that mediates Ca²⁺ independent, homophilic adhesions on the basolateral surface of most epithelial cells. The antigen is being used as a target for immunotherapy treatment of human carcinomas.
Storage Condition and Buffer	Rabbit IgG in phosphate buffered saline , pH 7.4, 150mM NaCl, 0.02% sodium azide and 50% glycerol. Store at +4°C short term. Store at -20°C long term. Avoid freeze / thaw cycle.

EpCAM Antibody - Protein Information

Name EPCAM

Synonyms GA733-2, M1S2, M4S1, MIC18, TACSTD1, TRO

Function

May act as a physical homophilic interaction molecule between intestinal epithelial cells (IECs) and intraepithelial lymphocytes (IELs) at the mucosal epithelium for providing immunological barrier as a first line of defense against mucosal infection. Plays a role in embryonic stem cells proliferation and differentiation. Up-regulates the expression of FABP5, MYC and cyclins A and E.

Cellular Location

Lateral cell membrane; Single-pass type I membrane protein. Cell junction, tight junction.

Note=Colocalizes with CLDN7 at the lateral cell membrane and tight junction

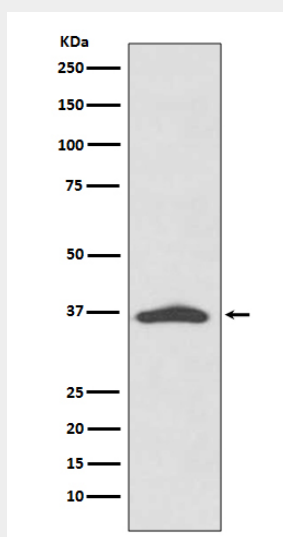
Tissue Location

Highly and selectively expressed by undifferentiated rather than differentiated embryonic stem cells (ESC) Levels rapidly diminish as soon as ESC's differentiate (at protein levels). Expressed in almost all epithelial cell membranes but not on mesodermal or neural cell membranes. Found on the surface of adenocarcinoma.

EpCAM Antibody - Protocols

Provided below are standard protocols that you may find useful for product applications.

- [Western Blot](#)
- [Blocking Peptides](#)
- [Dot Blot](#)
- [Immunohistochemistry](#)
- [Immunofluorescence](#)
- [Immunoprecipitation](#)
- [Flow Cytometry](#)
- [Cell Culture](#)

EpCAM Antibody - Images

Western blot analysis of EpCAM expression in A431 cell lysate.