

**Integrin alpha 2 Antibody**  
**Rabbit mAb**  
**Catalog # AP90785****Specification**

---

**Integrin alpha 2 Antibody - Product Information**

Application	WB, IHC, FC, ICC, IP
Primary Accession	<a href="#">P17301</a>
Reactivity	Rat
Clonality	Monoclonal

**Other Names**

BR; CD 49b; CD49 antigen like family member B; Collagen receptor; GPIa; HPA5; ITGA2; Platelet glycoprotein GPIa; VLA 2 alpha chain;

Isotype	Rabbit IgG
Host	Rabbit
Calculated MW	129295 Da

**Integrin alpha 2 Antibody - Additional Information**

Dilution	WB~~1:1000 IHC~~1:100~500 FC~~1:10~50 ICC~~N/A IP~~N/A
Purification	Affinity-chromatography
Immunogen	A synthesized peptide derived from human Integrin alpha 2
Description	Integrin alpha-2/beta-1 is a receptor for laminin, collagen, collagen C-propeptides, fibronectin and E-cadherin. It recognizes the proline-hydroxylated sequence G-F-P-G-E-R in collagen. It is responsible for adhesion of platelets and other cells to collagens, modulation of collagen and collagenase gene expression, force generation and organization of newly synthesized extracellular matrix.
Storage Condition and Buffer	Rabbit IgG in phosphate buffered saline , pH 7.4, 150mM NaCl, 0.02% sodium azide and 50% glycerol. Store at +4°C short term. Store at -20°C long term. Avoid freeze / thaw cycle.

**Integrin alpha 2 Antibody - Protein Information****Name** ITGA2**Synonyms** CD49B

### Function

Integrin alpha-2/beta-1 is a receptor for laminin, collagen, collagen C-propeptides, fibronectin and E-cadherin. It recognizes the proline-hydroxylated sequence G-F-P-G-E-R in collagen. It is responsible for adhesion of platelets and other cells to collagens, modulation of collagen and collagenase gene expression, force generation and organization of newly synthesized extracellular matrix. (Microbial infection) Integrin ITGA2:ITGB1 acts as a receptor for Human echoviruses 1 and 8.

### Cellular Location

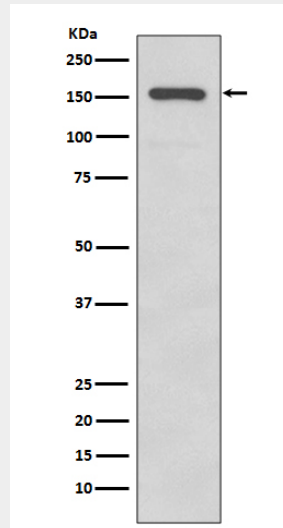
Membrane; Single-pass type I membrane protein.

### Integrin alpha 2 Antibody - Protocols

Provided below are standard protocols that you may find useful for product applications.

- [Western Blot](#)
- [Blocking Peptides](#)
- [Dot Blot](#)
- [Immunohistochemistry](#)
- [Immunofluorescence](#)
- [Immunoprecipitation](#)
- [Flow Cytometry](#)
- [Cell Culture](#)

### Integrin alpha 2 Antibody - Images



Western blot analysis of Integrin alpha 2 expression in A431 cell lysate.