

**Cytokeratin 4 Antibody**  
Rabbit mAb  
Catalog # AP90793**Specification**

---

**Cytokeratin 4 Antibody - Product Information**

Application	WB, IHC, ICC
Primary Accession	<a href="#">P19013</a>
Reactivity	Rat
Clonality	Monoclonal
<b>Other Names</b>	
Keratin4; Cytokeratin 4; Keratin-4; CK-4; CK4; KRT14; CYK4;	
Isotype	Rabbit IgG
Host	Rabbit
Calculated MW	56144 Da

**Cytokeratin 4 Antibody - Additional Information**

Dilution	WB~~1:1000 IHC~~1:100~500 ICC~~N/A
Purification	Affinity-chromatography
Immunogen	A synthesized peptide derived from human Cytokeratin 4
Description	Cytokeratins are a subfamily of intermediate filament keratins that are characterized by a remarkable biochemical diversity, which is represented in human epithelial tissues by at least 20 different polypeptides. Cytokeratin 4 is expressed in differentiated layers of the mucosal and esophageal epithelia along with Cytokeratin 13.
Storage Condition and Buffer	Rabbit IgG in phosphate buffered saline , pH 7.4, 150mM NaCl, 0.02% sodium azide and 50% glycerol. Store at +4°C short term. Store at -20°C long term. Avoid freeze / thaw cycle.

**Cytokeratin 4 Antibody - Protein Information****Name** KRT4**Synonyms** CYK4**Tissue Location**

Detected in the suprabasal layer of the stratified epithelium of the esophagus, exocervix, vagina, mouth and lingual mucosa, and in cells and cell clusters in the mucosa and serous gland ducts of

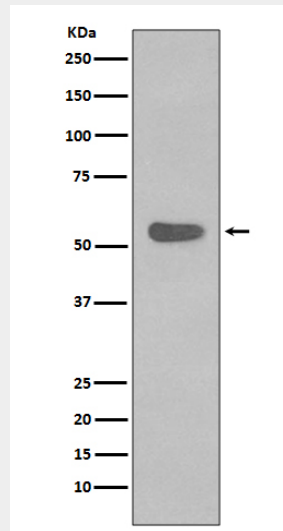
the esophageal submucosa (at protein level). Expressed widely in the exocervix and esophageal epithelium, with lowest levels detected in the basal cell layer.

### Cytokeratin 4 Antibody - Protocols

Provided below are standard protocols that you may find useful for product applications.

- [Western Blot](#)
- [Blocking Peptides](#)
- [Dot Blot](#)
- [Immunohistochemistry](#)
- [Immunofluorescence](#)
- [Immunoprecipitation](#)
- [Flow Cytometry](#)
- [Cell Culture](#)

### Cytokeratin 4 Antibody - Images



Western blot analysis of Cytokeratin 4 expression in A431 cell lysate.