

**OPRD1 Antibody**  
**Rabbit mAb**  
**Catalog # AP90796****Specification**

---

**OPRD1 Antibody - Product Information**

Application	WB, FC
Primary Accession	<a href="#">P41143</a>
Reactivity	Rat
Clonality	Monoclonal
<b>Other Names</b>	
Delta type opioid receptor; Delta type opioid receptor DOR1; DOR 1; mDOR; Nbor; Opioid receptor delta 1; OPRD 1;	
Isotype	Rabbit IgG
Host	Rabbit
Calculated MW	40369 Da

**OPRD1 Antibody - Additional Information**

Dilution	WB~~1:1000 FC~~1:10~50
Purification	Affinity-chromatography
Immunogen	A synthesized peptide derived from human OPRD1
Description	The opioid receptors are G-protein coupled, seven-transmembrane domain receptors for enkephalins, endorphins, and dynorphins. Signaling leads to the inhibition of adenylate cyclase activity. Inhibits neurotransmitter release by reducing calcium ion currents and increasing potassium ion conductance. Plays a role in the perception of pain and in opiate-mediated analgesia. Plays a role in developing analgesic tolerance to morphine.
Storage Condition and Buffer	Rabbit IgG in phosphate buffered saline , pH 7.4, 150mM NaCl, 0.02% sodium azide and 50% glycerol. Store at +4°C short term. Store at -20°C long term. Avoid freeze / thaw cycle.

**OPRD1 Antibody - Protein Information****Name** OPRD1**Synonyms** OPRD

**Function**

G-protein coupled receptor that functions as a receptor for endogenous enkephalins and for a subset of other opioids. Ligand binding causes a conformation change that triggers signaling via guanine nucleotide-binding proteins (G proteins) and modulates the activity of down-stream effectors, such as adenylate cyclase. Signaling leads to the inhibition of adenylate cyclase activity. Inhibits neurotransmitter release by reducing calcium ion currents and increasing potassium ion conductance. Plays a role in the perception of pain and in opiate-mediated analgesia. Plays a role in developing analgesic tolerance to morphine.

**Cellular Location**

Cell membrane; Multi-pass membrane protein

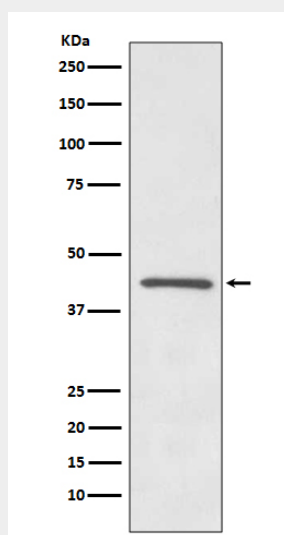
**Tissue Location**

Detected in oocytes (at protein level). Detected in brain cortex, hypothalamus, hippocampus and olfactory bulb. Detected in oocytes.

**OPRD1 Antibody - Protocols**

Provided below are standard protocols that you may find useful for product applications.

- [Western Blot](#)
- [Blocking Peptides](#)
- [Dot Blot](#)
- [Immunohistochemistry](#)
- [Immunofluorescence](#)
- [Immunoprecipitation](#)
- [Flow Cytometry](#)
- [Cell Culture](#)

**OPRD1 Antibody - Images**

Western blot analysis of OPRD1 expression in SH-SY5Y cell lysate.