

RON Antibody
Rabbit mAb
Catalog # AP90798

Specification

RON Antibody - Product Information

Application	WB, IHC, FC, ICC, IP
Primary Accession	Q04912
Clonality	Monoclonal
Other Names	
c met related tyrosine kinase; CD136 antigen; Macrophage stimulating 1 receptor; MSP receptor; p185 RON; PTK 8 Stem cell derived tyrosine kinase; MST1R variant RON30; MST1R variant RON62;	
Isotype	Rabbit IgG
Host	Rabbit
Calculated MW	152241 Da

RON Antibody - Additional Information

Dilution	WB~~1:1000 IHC~~1:100~500 FC~~1:10~50 ICC~~N/A IP~~N/A
Purification	Affinity-chromatography
Immunogen	A synthesized peptide derived from human RON
Description	Ron is initially synthesized in the cells as a single-chain, pro-Ron precursor that is cleaved into the two active chains. RON signaling activates the wound healing response by promoting epithelial cell migration, proliferation as well as survival at the wound site. Plays also a role in the innate immune response by regulating the migration and phagocytic activity of macrophages.
Storage Condition and Buffer	Rabbit IgG in phosphate buffered saline , pH 7.4, 150mM NaCl, 0.02% sodium azide and 50% glycerol. Store at +4°C short term. Store at -20°C long term. Avoid freeze / thaw cycle.

RON Antibody - Protein Information

Name MST1R

Synonyms PTK8, RON

Function

Receptor tyrosine kinase that transduces signals from the extracellular matrix into the cytoplasm by binding to MST1 ligand. Regulates many physiological processes including cell survival, migration and differentiation. Ligand binding at the cell surface induces autophosphorylation of RON on its intracellular domain that provides docking sites for downstream signaling molecules. Following activation by ligand, interacts with the PI3-kinase subunit PIK3R1, PLCG1 or the adapter GAB1. Recruitment of these downstream effectors by RON leads to the activation of several signaling cascades including the RAS-ERK, PI3 kinase-AKT, or PLCgamma-PKC. RON signaling activates the wound healing response by promoting epithelial cell migration, proliferation as well as survival at the wound site. Also plays a role in the innate immune response by regulating the migration and phagocytic activity of macrophages. Alternatively, RON can also promote signals such as cell migration and proliferation in response to growth factors other than MST1 ligand.

Cellular Location

Membrane; Single-pass type I membrane protein.

Tissue Location

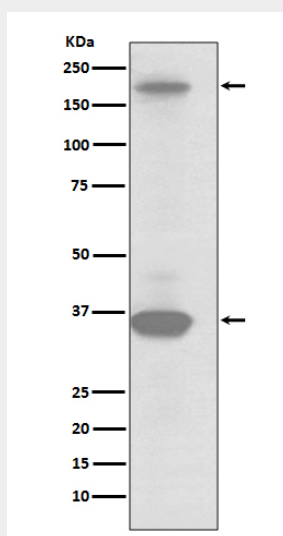
Expressed in colon, skin, lung and bone marrow.

RON Antibody - Protocols

Provided below are standard protocols that you may find useful for product applications.

- [Western Blot](#)
- [Blocking Peptides](#)
- [Dot Blot](#)
- [Immunohistochemistry](#)
- [Immunofluorescence](#)
- [Immunoprecipitation](#)
- [Flow Cytometry](#)
- [Cell Culture](#)

RON Antibody - Images



Western blot analysis of RON expression in SKBR3 cell lysate.