

ACR Antibody (Center)
Purified Rabbit Polyclonal Antibody (Pab)
Catalog # AP9079c**Specification**

ACR Antibody (Center) - Product Information

Application	FC, IHC-P, WB,E
Primary Accession	P10323
Reactivity	Human
Host	Rabbit
Clonality	Polyclonal
Isotype	Rabbit IgG
Antigen Region	99-127

ACR Antibody (Center) - Additional Information**Gene ID 49****Other Names**

Acrosin, Acrosin light chain, Acrosin heavy chain, ACR, ACRS

Target/Specificity

This ACR antibody is generated from rabbits immunized with a KLH conjugated synthetic peptide between 99-127 amino acids from the Central region of human ACR.

Dilution

FC~~1:10~50

IHC-P~~1:50~100

WB~~1:1000

E~~Use at an assay dependent concentration.

Format

Purified polyclonal antibody supplied in PBS with 0.09% (W/V) sodium azide. This antibody is prepared by Saturated Ammonium Sulfate (SAS) precipitation followed by dialysis against PBS.

Storage

Maintain refrigerated at 2-8°C for up to 2 weeks. For long term storage store at -20°C in small aliquots to prevent freeze-thaw cycles.

Precautions

ACR Antibody (Center) is for research use only and not for use in diagnostic or therapeutic procedures.

ACR Antibody (Center) - Protein Information**Name ACR****Synonyms ACRS**

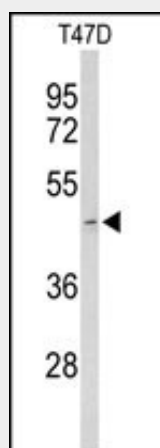
Function Acrosin is the major protease of mammalian spermatozoa. It is a serine protease of trypsin-like cleavage specificity, it is synthesized in a zymogen form, proacrosin and stored in the acrosome.

ACR Antibody (Center) - Protocols

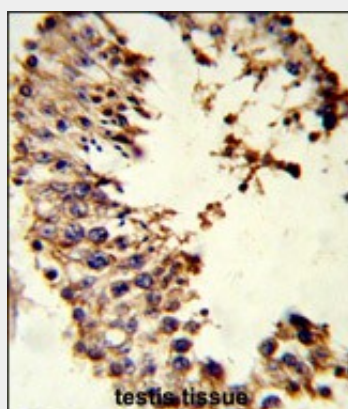
Provided below are standard protocols that you may find useful for product applications.

- [Western Blot](#)
- [Blocking Peptides](#)
- [Dot Blot](#)
- [Immunohistochemistry](#)
- [Immunofluorescence](#)
- [Immunoprecipitation](#)
- [Flow Cytometry](#)
- [Cell Culture](#)

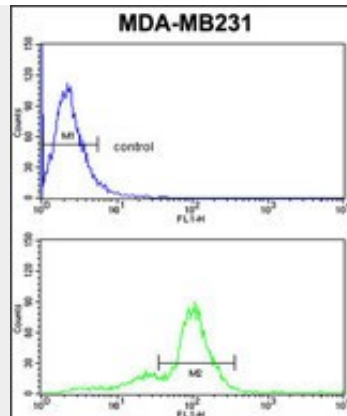
ACR Antibody (Center) - Images



Western blot analysis of ACR Antibody (Center) (Cat. #AP9079c) in T47D cell line lysates (35ug/lane). ACR (arrow) was detected using the purified Pab.



Formalin-fixed and paraffin-embedded human testis tissue reacted with ACR Antibody (Center), which was peroxidase-conjugated to the secondary antibody, followed by DAB staining. This data demonstrates the use of this antibody for immunohistochemistry; clinical relevance has not been evaluated.



ACR Antibody (Center) (Cat. #AP9079c) flow cytometric analysis of MDA-MB231 cells (bottom histogram) compared to a negative control cell (top histogram). FITC-conjugated goat-anti-rabbit secondary antibodies were used for the analysis.

ACR Antibody (Center) - Background

ACR is the major proteinase present in the acrosome of mature spermatozoa. It is a typical serine proteinase with trypsin-like specificity. It is stored in the acrosome in its precursor form, proacrosin. The active enzyme functions in the lysis of the zona pellucida, thus facilitating penetration of the sperm through the innermost glycoprotein layers of the ovum. The mRNA for proacrosin is synthesized only in the postmeiotic stages of spermatogenesis. In humans proacrosin first appears in the haploid spermatids.

ACR Antibody (Center) - References

- Dube, C., et al., J. Androl. 26 (4), 519-528 (2005)
Furlong, L.L., et al., Fertil. Steril. 83 (6), 1791-1796 (2005)