

**EIF2C3 Antibody**  
**Rabbit mAb**  
**Catalog # AP90809****Specification**

---

**EIF2C3 Antibody - Product Information**

Application	WB
Primary Accession	<a href="#">Q9H9G7</a>
Reactivity	Rat
Clonality	Monoclonal
<b>Other Names</b>	
EIF2C3; Argonaute3; Argonaute 3; AGO3; EIF-2C 3; HAGO3; EIF2C 3; Protein argonaute-3;	
Isotype	Rabbit IgG
Host	Rabbit
Calculated MW	97360 Da

**EIF2C3 Antibody - Additional Information**

Dilution	WB~~1:1000
Purification	Affinity-chromatography
Immunogen	A synthesized peptide derived from human EIF2C3
Description	There are four members in the mammalian Argonaute family and only Argonaute 2 (Ago2) possesses the Slicer endonuclease activity. Argonaute proteins participate in the various steps of microRNA-mediated gene silencing, such as repression of translation and mRNA turnover.
Storage Condition and Buffer	Rabbit IgG in phosphate buffered saline , pH 7.4, 150mM NaCl, 0.02% sodium azide and 50% glycerol. Store at +4°C short term. Store at -20°C long term. Avoid freeze / thaw cycle.

**EIF2C3 Antibody - Protein Information****Name** AGO3**Synonyms** EIF2C3**Function**

Required for RNA-mediated gene silencing (RNAi). Binds to short RNAs such as microRNAs (miRNAs) and represses the translation of mRNAs which are complementary to them. Proposed to be involved in stabilization of small RNA derivatives (siRNA) derived from processed RNA polymerase III-transcribed Alu repeats containing a DR2 retinoic acid response element (RARE) in stem cells and in the subsequent siRNA-dependent degradation of a subset of RNA polymerase II-transcribed coding mRNAs by recruiting a mRNA decapping complex involving EDC4. Possesses

RNA slicer activity but only on select RNAs bearing 5'- and 3'-flanking sequences to the region of guide-target complementarity (PubMed:<a href="http://www.uniprot.org/citations/29040713" target="\_blank">29040713</a>).

#### **Cellular Location**

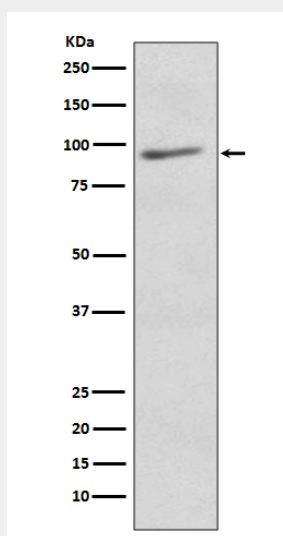
Cytoplasm, P-body {ECO:0000255|HAMAP- Rule:MF\_03032, ECO:0000269|PubMed:16081698}

#### **EIF2C3 Antibody - Protocols**

Provided below are standard protocols that you may find useful for product applications.

- [Western Blot](#)
- [Blocking Peptides](#)
- [Dot Blot](#)
- [Immunohistochemistry](#)
- [Immunofluorescence](#)
- [Immunoprecipitation](#)
- [Flow Cytometry](#)
- [Cell Culture](#)

#### **EIF2C3 Antibody - Images**



Western blot analysis of EIF2C3 expression in Human brain lysate.