

**IRF6 Antibody**  
**Rabbit mAb**  
**Catalog # AP90818****Specification**

---

**IRF6 Antibody - Product Information**

Application	WB, IHC, ICC
Primary Accession	<a href="#">O14896</a>
Reactivity	Rat
Clonality	Monoclonal
<b>Other Names</b>	
Interferon regulatory factor 6; IRF 6; LPS;OFC 6; PIT; PPS; PPS1; VWS; VWS1;	
Isotype	Rabbit IgG
Host	Rabbit
Calculated MW	53130 Da

**IRF6 Antibody - Additional Information**

Dilution	WB~~1:1000 IHC~~1:100~500 ICC~~N/A
Purification	Affinity-chromatography
Immunogen	A synthesized peptide derived from human IRF6
Description	Play an important role in pathogen defense, autoimmunity, lymphocyte development, cell growth, and susceptibility to transformation. Plays a role in regulating mammary epithelial cell proliferation (By similarity). May regulate WDR65 transcription.
Storage Condition and Buffer	Rabbit IgG in phosphate buffered saline , pH 7.4, 150mM NaCl, 0.02% sodium azide and 50% glycerol. Store at +4°C short term. Store at -20°C long term. Avoid freeze / thaw cycle.

**IRF6 Antibody - Protein Information****Name** IRF6**Function**

Probable DNA-binding transcriptional activator. Key determinant of the keratinocyte proliferation-differentiation switch involved in appropriate epidermal development (By similarity). Plays a role in regulating mammary epithelial cell proliferation (By similarity). May regulate WDR65 transcription (By similarity).

**Cellular Location**

Nucleus. Cytoplasm Note=Translocates to nucleus in response to an activating signal

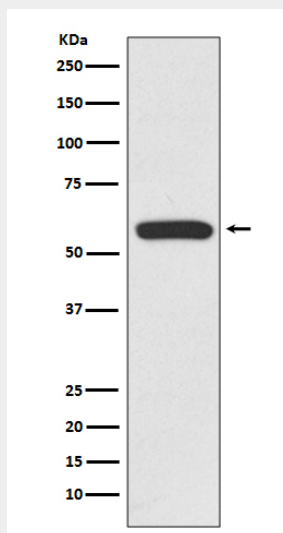
**Tissue Location**

Expressed in normal mammary epithelial cells. Expression is reduced or absent in breast carcinomas

**IRF6 Antibody - Protocols**

Provided below are standard protocols that you may find useful for product applications.

- [Western Blot](#)
- [Blocking Peptides](#)
- [Dot Blot](#)
- [Immunohistochemistry](#)
- [Immunofluorescence](#)
- [Immunoprecipitation](#)
- [Flow Cytometry](#)
- [Cell Culture](#)

**IRF6 Antibody - Images**

Western blot analysis of IRF6 expression in Jurkat cell lysate.