

CDK8 Antibody
Rabbit mAb
Catalog # AP90820**Specification**

CDK8 Antibody - Product Information

Application	WB, IP
Primary Accession	P49336
Reactivity	Rat
Clonality	Monoclonal

Other Names

CDK8 protein kinase; Cell division protein kinase 8; Cyclin Dependent kinase 8; K35; Mediator complex subunit cdk8; Mediator of RNA polymerase II transcription subunit cdk8; Protein kinase K35;

Isotype	Rabbit IgG
Host	Rabbit
Calculated MW	53284 Da

CDK8 Antibody - Additional Information

Dilution	WB~~1:1000
Purification	IP~~N/A
Immunogen	Affinity-chromatography
Description	A synthesized peptide derived from human CDK8
	Component of the Mediator complex, a coactivator involved in regulated gene transcription of nearly all RNA polymerase II-dependent genes. Mediator functions as a bridge to convey information from gene-specific regulatory proteins to the basal RNA polymerase II transcription machinery.
Storage Condition and Buffer	Rabbit IgG in phosphate buffered saline , pH 7.4, 150mM NaCl, 0.02% sodium azide and 50% glycerol. Store at +4°C short term. Store at -20°C long term. Avoid freeze / thaw cycle.

CDK8 Antibody - Protein Information**Name** CDK8**Function**

Component of the Mediator complex, a coactivator involved in regulated gene transcription of nearly all RNA polymerase II-dependent genes. Mediator functions as a bridge to convey information from gene- specific regulatory proteins to the basal RNA polymerase II transcription machinery. Mediator is recruited to promoters by direct interactions with regulatory proteins and

serves as a scaffold for the assembly of a functional pre-initiation complex with RNA polymerase II and the general transcription factors. Phosphorylates the CTD (C- terminal domain) of the large subunit of RNA polymerase II (RNAP II), which may inhibit the formation of a transcription initiation complex. Phosphorylates CCNH leading to down-regulation of the TFIIH complex and transcriptional repression. Recruited through interaction with MAML1 to hyperphosphorylate the intracellular domain of NOTCH, leading to its degradation.

Cellular Location

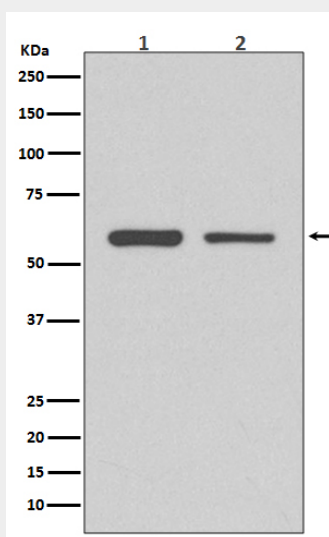
Nucleus.

CDK8 Antibody - Protocols

Provided below are standard protocols that you may find useful for product applications.

- [Western Blot](#)
- [Blocking Peptides](#)
- [Dot Blot](#)
- [Immunohistochemistry](#)
- [Immunofluorescence](#)
- [Immunoprecipitation](#)
- [Flow Cytometry](#)
- [Cell Culture](#)

CDK8 Antibody - Images



Western blot analysis of CDK8 expression in (1) HeLa cell lysate; (2) 3T3 cell lysate.