

**Cyclin E2 Antibody**  
**Rabbit mAb**  
**Catalog # AP90822****Specification**

---

**Cyclin E2 Antibody - Product Information**

Application	WB, IHC, FC, ICC
Primary Accession	<a href="#">O96020</a>
Clonality	Monoclonal
<b>Other Names</b>	
CCN E2; CCNE 2; CCNE2 protein; CYC E2; CYCE 2; CyclinE2; G1/S specific cyclin E2;	
Isotype	Rabbit IgG
Host	Rabbit
Calculated MW	46757 Da

**Cyclin E2 Antibody - Additional Information**

Dilution	WB~~1:1000 IHC~~1:100~500 FC~~1:10~50 ICC~~N/A
Purification	Affinity-chromatography
Immunogen	A synthesized peptide derived from human Cyclin E2
Description	Cyclin E1 and cyclin E2 can associate with and activate CDK2. Upon DNA damage, upregulation/activation of the CDK inhibitors p21 Waf1/Cip1 and p27 Kip1 prevent cyclin E/CDK2 activation, resulting in G1/S arrest. Essential for the control of the cell cycle at the late G1 and early S phase.
Storage Condition and Buffer	Rabbit IgG in phosphate buffered saline , pH 7.4, 150mM NaCl, 0.02% sodium azide and 50% glycerol. Store at +4°C short term. Store at -20°C long term. Avoid freeze / thaw cycle.

**Cyclin E2 Antibody - Protein Information****Name** CCNE2**Function**

Essential for the control of the cell cycle at the late G1 and early S phase.

**Cellular Location**

Nucleus.

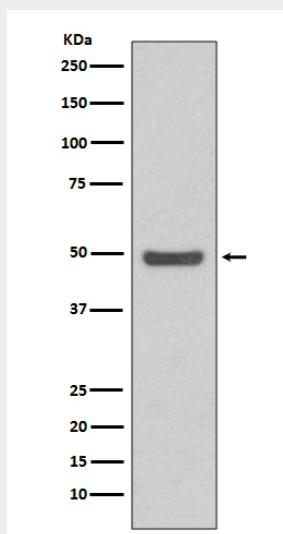
**Tissue Location**

According to PubMed:9858585, highest levels of expression in adult testis, thymus and brain. Lower levels in placenta, spleen and colon. Consistently elevated levels in tumor-derived cells compared to non-transformed proliferating cells. According to PubMed:9840927: low levels in thymus, prostate, brain, skeletal muscle, and kidney. Elevated levels in lung. According to PubMed:9840943 highly expressed in testis, placenta, thymus and brain. In a lesser extent in small intestine and colon.

**Cyclin E2 Antibody - Protocols**

Provided below are standard protocols that you may find useful for product applications.

- [Western Blot](#)
- [Blocking Peptides](#)
- [Dot Blot](#)
- [Immunohistochemistry](#)
- [Immunofluorescence](#)
- [Immunoprecipitation](#)
- [Flow Cytometry](#)
- [Cell Culture](#)

**Cyclin E2 Antibody - Images**

Western blot analysis of Cyclin E2 expression in HeLa cell lysate.