

**SOX1 Antibody**  
**Rabbit mAb**  
**Catalog # AP90825****Specification**

---

**SOX1 Antibody - Product Information**

Application	WB, IHC, ICC
Primary Accession	<a href="#">O00570</a>
Clonality	Monoclonal
<b>Other Names</b>	
Sex determining region Y box 1; sox1; SRY; SRY box containing gene 1; SRY related HMG box gene 1; Transcription factor Sox-1;	
Isotype	Rabbit IgG
Host	Rabbit
Calculated MW	39023 Da

**SOX1 Antibody - Additional Information**

Dilution	WB~~1:1000 IHC~~1:100~500 ICC~~N/A
Purification	Affinity-chromatography
Immunogen	A synthesized peptide derived from human SOX1
Description	Sox (Sry-related box) genes encode a family of transcription factors that play a myriad of roles in developmental processes. Sox1 and Sox2 are the earliest markers that identify neuroectodermal tissue, and these markers, together with Sox9 collectively mark neuronal stem cells (NSC's) that are present in neurogenically active areas of the mature rodent brain. Sox1 is thought to maintain the cell cycle and promote self renewal in NSCs.
Storage Condition and Buffer	Rabbit IgG in phosphate buffered saline , pH 7.4, 150mM NaCl, 0.02% sodium azide and 50% glycerol. Store at +4°C short term. Store at -20°C long term. Avoid freeze / thaw cycle.

**SOX1 Antibody - Protein Information****Name** SOX1**Function**

Transcriptional activator. May function as a switch in neuronal development. Keeps neural cells undifferentiated by counteracting the activity of proneural proteins and suppresses neuronal

differentiation (By similarity).

**Cellular Location**

Nucleus.

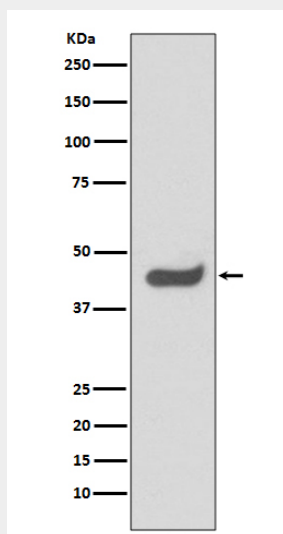
**Tissue Location**

Mainly expressed in the developing central nervous system

**SOX1 Antibody - Protocols**

Provided below are standard protocols that you may find useful for product applications.

- [Western Blot](#)
- [Blocking Peptides](#)
- [Dot Blot](#)
- [Immunohistochemistry](#)
- [Immunofluorescence](#)
- [Immunoprecipitation](#)
- [Flow Cytometry](#)
- [Cell Culture](#)

**SOX1 Antibody - Images**

Western blot analysis of SOX1 expression in HeLa cell lysate.