

SOX10 Antibody
Rabbit mAb
Catalog # AP90826**Specification**

SOX10 Antibody - Product Information

Application	WB, FC, ICC
Primary Accession	P56693
Reactivity	Rat
Clonality	Monoclonal
Other Names	
SOX10; DOM; Transcription factor SOX-10; WS4; PCWH; WS2E; SRY-related HMG-box gene 10; WS4C;	
Isotype	Rabbit IgG
Host	Rabbit
Calculated MW	49911 Da

SOX10 Antibody - Additional Information

Dilution	WB~~1:1000 FC~~1:10~50 ICC~~N/A
Purification	Affinity-chromatography
Immunogen	A synthesized peptide derived from human SOX10
Description	Sox10 is a member of the SOX (SRY-related HMG-box) family of transcription factors involved in the regulation of embryonic development and the determination of cell fate. Sox10 is an important regulator of neural crest and peripheral nervous system development.
Storage Condition and Buffer	Rabbit IgG in phosphate buffered saline , pH 7.4, 150mM NaCl, 0.02% sodium azide and 50% glycerol. Store at +4°C short term. Store at -20°C long term. Avoid freeze / thaw cycle.

SOX10 Antibody - Protein Information**Name** SOX10**Function**

Transcription factor that plays a central role in developing and mature glia (By similarity). Specifically activates expression of myelin genes, during oligodendrocyte (OL) maturation, such as DUSP15 and MYRF, thereby playing a central role in oligodendrocyte maturation and CNS myelination (By similarity). Once induced, MYRF cooperates with SOX10 to implement the myelination program (By similarity). Transcriptional activator of MITF, acting synergistically with

PAX3 (PubMed:21965087). Transcriptional activator of MBP, via binding to the gene promoter (By similarity).

Cellular Location

Cytoplasm. Nucleus. Mitochondrion outer membrane {ECO:0000250|UniProtKB:Q04888}; Peripheral membrane protein {ECO:0000250|UniProtKB:Q04888}; Cytoplasmic side {ECO:0000250|UniProtKB:Q04888}

Tissue Location

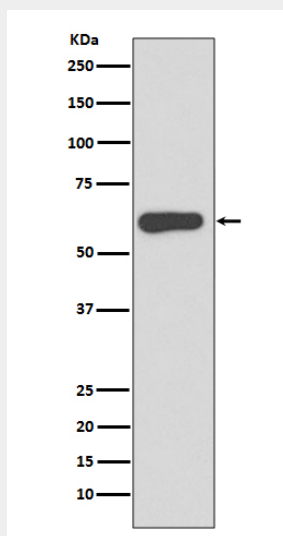
Expressed in fetal brain and in adult brain, heart, small intestine and colon

SOX10 Antibody - Protocols

Provided below are standard protocols that you may find useful for product applications.

- [Western Blot](#)
- [Blocking Peptides](#)
- [Dot Blot](#)
- [Immunohistochemistry](#)
- [Immunofluorescence](#)
- [Immunoprecipitation](#)
- [Flow Cytometry](#)
- [Cell Culture](#)

SOX10 Antibody - Images



Western blot analysis of SOX10 expression in A375 cell lysate.