

Cyclin D3 Antibody
Rabbit mAb
Catalog # AP90828**Specification****Cyclin D3 Antibody - Product Information**

Application **WB, FC, ICC**
Primary Accession **[P30281](#)**
Clonality **Monoclonal**
Other Names
CCND 3; Ccnd3; CyclinD3; D3 type cyclin; G1 S specific cyclin D3;

Isotype **Rabbit IgG**
Host **Rabbit**
Calculated MW **32520 Da**

Cyclin D3 Antibody - Additional Information

Dilution **WB~~1:1000**
FC~~1:10~50
ICC~~N/A
Purification **Affinity-chromatography**
Immunogen **A synthesized peptide derived from human Cyclin D3**
Description **Regulatory component of the cyclin D3-CDK4 (DC) complex that phosphorylates and inhibits members of the retinoblastoma (RB) protein family including RB1 and regulates the cell-cycle during G1/S transition.**
Storage Condition and Buffer **Rabbit IgG in phosphate buffered saline , pH 7.4, 150mM NaCl, 0.02% sodium azide and 50% glycerol. Store at +4°C short term. Store at -20°C long term. Avoid freeze / thaw cycle.**

Cyclin D3 Antibody - Protein Information

Name CCND3 {ECO:0000303|PubMed:1386336, ECO:0000312|HGNC:HGNC:1585}

Function

Regulatory component of the cyclin D3-CDK4 (DC) complex that phosphorylates and inhibits members of the retinoblastoma (RB) protein family including RB1 and regulates the cell-cycle during G(1)/S transition (PubMed:8114739). Phosphorylation of RB1 allows dissociation of the transcription factor E2F from the RB/E2F complex and the subsequent transcription of E2F target genes which are responsible for the progression through the G(1) phase (PubMed:8114739). Hypophosphorylates RB1 in early G(1) phase (PubMed:8114739).

[8114739](http://www.uniprot.org/citations/8114739)). Cyclin D- CDK4 complexes are major integrators of various mitogenic and antimitogenic signals (PubMed: [8114739](http://www.uniprot.org/citations/8114739)). Component of the ternary complex, cyclin D3/CDK4/CDKN1B, required for nuclear translocation and activity of the cyclin D-CDK4 complex (PubMed: [16782892](http://www.uniprot.org/citations/16782892)). Shows transcriptional coactivator activity with ATF5 independently of CDK4 (PubMed: [15358120](http://www.uniprot.org/citations/15358120)).

Cellular Location

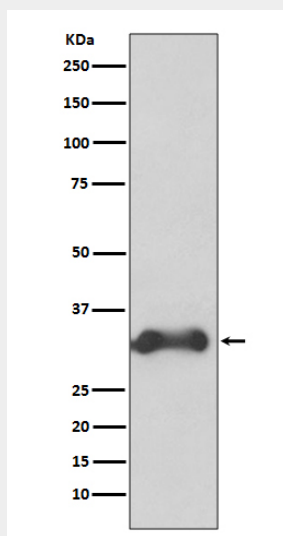
Nucleus. Cytoplasm

Cyclin D3 Antibody - Protocols

Provided below are standard protocols that you may find useful for product applications.

- [Western Blot](#)
- [Blocking Peptides](#)
- [Dot Blot](#)
- [Immunohistochemistry](#)
- [Immunofluorescence](#)
- [Immunoprecipitation](#)
- [Flow Cytometry](#)
- [Cell Culture](#)

Cyclin D3 Antibody - Images



Western blot analysis of Cyclin D3 expression in K562 cell lysate.