

CDC2L6 Antibody (Center)
Purified Rabbit Polyclonal Antibody (Pab)
Catalog # AP9082c**Specification**

CDC2L6 Antibody (Center) - Product Information

Application	WB, IHC-P, FC,E
Primary Accession	Q9BWU1
Other Accession	Q8BWD8
Reactivity	Human, Mouse
Host	Rabbit
Clonality	Polyclonal
Isotype	Rabbit IgG
Calculated MW	56802
Antigen Region	253-285

CDC2L6 Antibody (Center) - Additional Information**Gene ID** 23097**Other Names**

Cyclin-dependent kinase 19, CDC2-related protein kinase 6, Cell division cycle 2-like protein kinase 6, Cell division protein kinase 19, Cyclin-dependent kinase 11, Death-preventing kinase, CDK19, CDC2L6, CDK11, KIAA1028

Target/Specificity

This CDC2L6 antibody is generated from rabbits immunized with a KLH conjugated synthetic peptide between 253-285 amino acids from the Central region of human CDC2L6.

Dilution

WB~~1:1000
IHC-P~~1:50~100
FC~~1:10~50

Format

Purified polyclonal antibody supplied in PBS with 0.09% (W/V) sodium azide. This antibody is prepared by Saturated Ammonium Sulfate (SAS) precipitation followed by dialysis against PBS.

Storage

Maintain refrigerated at 2-8°C for up to 2 weeks. For long term storage store at -20°C in small aliquots to prevent freeze-thaw cycles.

Precautions

CDC2L6 Antibody (Center) is for research use only and not for use in diagnostic or therapeutic procedures.

CDC2L6 Antibody (Center) - Protein Information

Name CDK19

Synonyms CDC2L6, CDK11, KIAA1028

Cellular Location

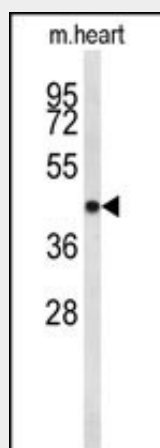
Cytoplasm. Cytoplasm, perinuclear region. Nucleus

CDC2L6 Antibody (Center) - Protocols

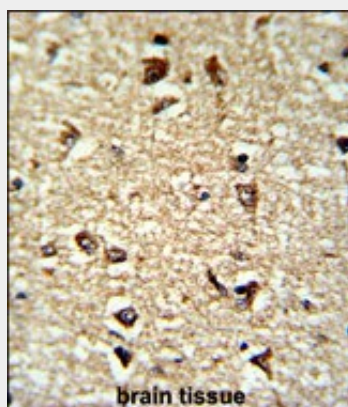
Provided below are standard protocols that you may find useful for product applications.

- [Western Blot](#)
- [Blocking Peptides](#)
- [Dot Blot](#)
- [Immunohistochemistry](#)
- [Immunofluorescence](#)
- [Immunoprecipitation](#)
- [Flow Cytometry](#)
- [Cell Culture](#)

CDC2L6 Antibody (Center) - Images

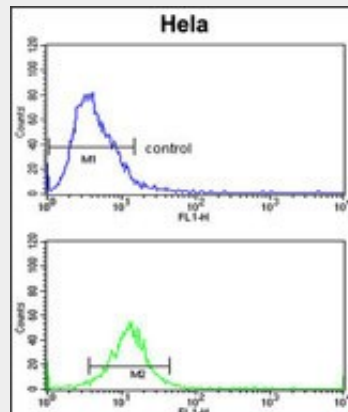


Western blot analysis of CDC2L6 Antibody (Center) (Cat. #AP9082c) in mouse heart tissue lysates (35ug/lane). CDC2L6 (arrow) was detected using the purified Pab.



Formalin-fixed and paraffin-embedded human brain tissue reacted with CDC2L6 Antibody (Center), which was peroxidase-conjugated to the secondary antibody, followed by DAB staining.

This data demonstrates the use of this antibody for immunohistochemistry; clinical relevance has not been evaluated.



CDC2L6 Antibody (Center) (Cat. #AP9082c) flow cytometric analysis of HeLa cells (bottom histogram) compared to a negative control cell (top histogram). FITC-conjugated goat-anti-rabbit secondary antibodies were used for the analysis.

CDC2L6 Antibody (Center) - Background

CDC2L6 is one of the components of the Mediator coactivator complex. The Mediator complex is a multiprotein complex required for transcriptional activation by DNA binding transcription factors of genes transcribed by RNA polymerase II. The protein encoded by this gene is similar to cyclin-dependent kinase 8 which can also be a component of the Mediator complex.

CDC2L6 Antibody (Center) - References

Malumbres, M., et al. Nat. Cell Biol. 11 (11), 1275-1276 (2009)
Loyer, P., et al., J. Biol. Chem. 283 (12), 7721-7732 (2008)