

Cyclin A2 Antibody
Rabbit mAb
Catalog # AP90837**Specification**

Cyclin A2 Antibody - Product Information

| | |
|---|------------------------|
| Application | WB, IHC, ICC |
| Primary Accession | P20248 |
| Reactivity | Rat |
| Clonality | Monoclonal |
| Other Names | |
| CCN1; CCNA; Ccna2; Cyclin A2; Cyclin-A; | |

| | |
|---------------|------------|
| Isotype | Rabbit IgG |
| Host | Rabbit |
| Calculated MW | 48551 Da |

Cyclin A2 Antibody - Additional Information

| | |
|------------------------------|---|
| Dilution | WB~~1:1000 IHC~~1:100~500 ICC~~N/A |
| Purification | Affinity-chromatography |
| Immunogen | A synthesized peptide derived from human Cyclin A2 |
| Description | Cyclin A seems to be required for both S-phase and M-phase. A number of studies have described the ability of over-expressed cyclin A to accelerate the G1 to S transition causing DNA replication, and cyclin A antisense DNA can prevent DNA replication. Cyclin A availability is apparently the rate-limiting step for entry into mitosis, and cyclin A is required for completion of prophase. |
| Storage Condition and Buffer | Rabbit IgG in phosphate buffered saline , pH 7.4, 150mM NaCl, 0.02% sodium azide and 50% glycerol. Store at +4°C short term. Store at -20°C long term. Avoid freeze / thaw cycle. |

Cyclin A2 Antibody - Protein Information**Name** CCNA2 ([HGNC:1578](#))**Function**

Cyclin which controls both the G1/S and the G2/M transition phases of the cell cycle. Functions through the formation of specific serine/threonine protein kinase holoenzyme complexes with the cyclin- dependent protein kinases CDK1 or CDK2. The cyclin subunit confers the substrate

specificity of these complexes and differentially interacts with and activates CDK1 and CDK2 throughout the cell cycle.

Cellular Location

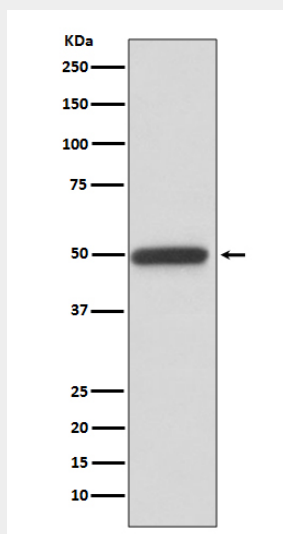
Nucleus. Cytoplasm. Note=Exclusively nuclear during interphase (PubMed:1312467). Detected in the nucleus and the cytoplasm at prophase (PubMed:1312467). Cytoplasmic when associated with SCAPER (PubMed:17698606).

Cyclin A2 Antibody - Protocols

Provided below are standard protocols that you may find useful for product applications.

- [Western Blot](#)
- [Blocking Peptides](#)
- [Dot Blot](#)
- [Immunohistochemistry](#)
- [Immunofluorescence](#)
- [Immunoprecipitation](#)
- [Flow Cytometry](#)
- [Cell Culture](#)

Cyclin A2 Antibody - Images



Western blot analysis of Cyclin A2 expression in Jurkat cell lysate.