

**Calnexin Antibody**  
**Rabbit mAb**  
**Catalog # AP90839****Specification**

---

**Calnexin Antibody - Product Information**

Application	WB, IHC, FC, ICC
Primary Accession	<a href="#">P27824</a>
Reactivity	Rat
Clonality	Monoclonal
<b>Other Names</b>	
Calnexin; CANX; CNX; IP90; Major histocompatibility complex class I antigen-binding protein p88; p90;	
Isotype	Rabbit IgG
Host	Rabbit
Calculated MW	67568 Da

**Calnexin Antibody - Additional Information**

Dilution	WB~~1:1000 IHC~~1:100~500 FC~~1:10~50 ICC~~N/A
Purification	Affinity-chromatography
Immunogen	A synthesized peptide derived from human Calnexin
Description	Calnexin is a calcium-binding protein embedded in the ER membrane that retains the newly synthesized glycoproteins inside the ER to ensure proper folding and quality control (3-5). The specificity of calnexin for a subset of glycoproteins is defined by a lectin site, which binds an early oligosaccharide intermediate on the folding glycoprotein.
Storage Condition and Buffer	Rabbit IgG in phosphate buffered saline , pH 7.4, 150mM NaCl, 0.02% sodium azide and 50% glycerol. Store at +4°C short term. Store at -20°C long term. Avoid freeze / thaw cycle.

**Calnexin Antibody - Protein Information****Name** CANX**Function**

Calcium-binding protein that interacts with newly synthesized monoglucosylated glycoproteins in the endoplasmic reticulum. It may act in assisting protein assembly and/or in the retention within

the ER of unassembled protein subunits. It seems to play a major role in the quality control apparatus of the ER by the retention of incorrectly folded proteins. Associated with partial T-cell antigen receptor complexes that escape the ER of immature thymocytes, it may function as a signaling complex regulating thymocyte maturation. Additionally it may play a role in receptor-mediated endocytosis at the synapse.

#### Cellular Location

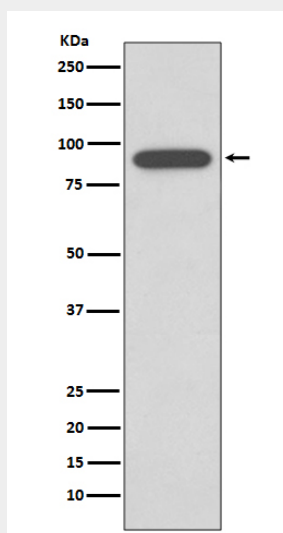
Endoplasmic reticulum membrane; Single-pass type I membrane protein. Mitochondrion membrane {ECO:0000250|UniProtKB:P24643}; Single-pass type I membrane protein. Melanosome membrane; Single-pass type I membrane protein. Note=Identified by mass spectrometry in melanosome fractions from stage I to stage IV (PubMed:12643545, PubMed:17081065). The palmitoylated form preferentially localizes to the perinuclear rough ER (PubMed:22314232) Localizes to endoplasmic reticulum mitochondria-associated membrane (MAMs) that connect the endoplasmic reticulum and the mitochondria (By similarity). {ECO:0000250|UniProtKB:P24643, ECO:0000269|PubMed:12643545, ECO:0000269|PubMed:17081065, ECO:0000269|PubMed:22314232}

#### Calnexin Antibody - Protocols

Provided below are standard protocols that you may find useful for product applications.

- [Western Blot](#)
- [Blocking Peptides](#)
- [Dot Blot](#)
- [Immunohistochemistry](#)
- [Immunofluorescence](#)
- [Immunoprecipitation](#)
- [Flow Cytometry](#)
- [Cell Culture](#)

#### Calnexin Antibody - Images



Western blot analysis of Calnexin expression in HepG2 cell lysate.