

DUSP2 Antibody (C-term)
Purified Rabbit Polyclonal Antibody (Pab)
Catalog # AP9084B

Specification

DUSP2 Antibody (C-term) - Product Information

Application	FC, WB,E
Primary Accession	Q05923
Other Accession	Q05922
Reactivity	Human, Mouse
Host	Rabbit
Clonality	Polyclonal
Isotype	Rabbit IgG
Calculated MW	34400
Antigen Region	262-290

DUSP2 Antibody (C-term) - Additional Information

Gene ID 1844

Other Names

Dual specificity protein phosphatase 2, Dual specificity protein phosphatase PAC-1, DUSP2, PAC1

Target/Specificity

This DUSP2 antibody is generated from rabbits immunized with a KLH conjugated synthetic peptide between 262-290 amino acids from the C-terminal region of human DUSP2.

Dilution

FC~~1:10~50

WB~~1:1000

E~~Use at an assay dependent concentration.

Format

Purified polyclonal antibody supplied in PBS with 0.09% (W/V) sodium azide. This antibody is prepared by Saturated Ammonium Sulfate (SAS) precipitation followed by dialysis against PBS.

Storage

Maintain refrigerated at 2-8°C for up to 2 weeks. For long term storage store at -20°C in small aliquots to prevent freeze-thaw cycles.

Precautions

DUSP2 Antibody (C-term) is for research use only and not for use in diagnostic or therapeutic procedures.

DUSP2 Antibody (C-term) - Protein Information

Name DUSP2 ([HGNC:3068](#))

Synonyms PAC1

Function Dephosphorylates both phosphorylated Thr and Tyr residues in MAPK1, and dephosphorylation of phosphotyrosine is slightly faster than that of phosphothreonine (PubMed:[8107850](#)). Can dephosphorylate MAPK1 (By similarity).

Cellular Location

Nucleus.

Tissue Location

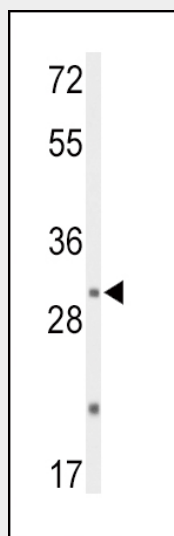
Expressed in hematopoietic tissues.

DUSP2 Antibody (C-term) - Protocols

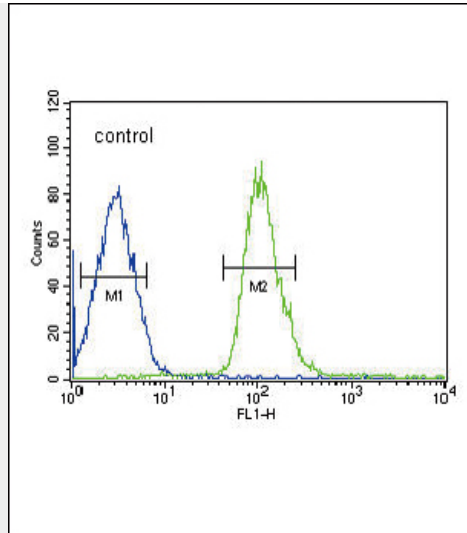
Provided below are standard protocols that you may find useful for product applications.

- [Western Blot](#)
- [Blocking Peptides](#)
- [Dot Blot](#)
- [Immunohistochemistry](#)
- [Immunofluorescence](#)
- [Immunoprecipitation](#)
- [Flow Cytometry](#)
- [Cell Culture](#)

DUSP2 Antibody (C-term) - Images



Western blot analysis of DUSP2 Antibody (C-term) (Cat. #AP9084b) in mouse liver tissue lysates (35ug/lane). DUSP2 (arrow) was detected using the purified Pab.



DUSP2 Antibody (C-term) (Cat. #AP9084b) flow cytometric analysis of HepG2 cells (right histogram) compared to a negative control cell (left histogram). FITC-conjugated goat-anti-rabbit secondary antibodies were used for the analysis.

DUSP2 Antibody (C-term) - Background

DUSP2 is a member of the dual specificity protein phosphatase subfamily. These phosphatases inactivate their target kinases by dephosphorylating both the phosphoserine/threonine and phosphotyrosine residues. They negatively regulate members of the mitogen-activated protein (MAP) kinase superfamily (MAPK/ERK, SAPK/JNK, p38), which are associated with cellular proliferation and differentiation. Different members of the family of dual specificity phosphatases show distinct substrate specificities for various MAP kinases, different tissue distribution and subcellular localization, and different modes of inducibility of their expression by extracellular stimuli.

DUSP2 Antibody (C-term) - References

Caunt,C.J., et.al., J. Biol. Chem. 283 (10), 6241-6252 (2008)
 Baranyai,R., et.al., Neuropsychobiology 57 (3), 146-150 (2008)