

**Histone H1.0 Antibody**  
**Rabbit mAb**  
**Catalog # AP90851****Specification**

---

**Histone H1.0 Antibody - Product Information**

Application	WB, IHC, ICC
Primary Accession	<a href="#">P07305</a>
Reactivity	Rat
Clonality	Monoclonal
<b>Other Names</b>	
Histone H1.0; Histone H1(0); Histone H1.0, N-terminally processed; H1F0; H1FV; Histone H5;	
Isotype	Rabbit IgG
Host	Rabbit
Calculated MW	20863 Da

**Histone H1.0 Antibody - Additional Information**

Dilution	WB~~1:1000 IHC~~1:100~500 ICC~~N/A
Purification	Affinity-chromatography
Immunogen	A synthesized peptide derived from human Histone H1.0
Description	Histone H1.0 is a lysine rich member of the H1 family of linker histones. The H1 family of proteins interacts with linker DNA between nucleosomes and mediates compaction into higher order chromatin. Histones H1 are necessary for the condensation of nucleosome chains into higher-order structures. The H1F0 histones are found in cells that are in terminal stages of differentiation or that have low rates of cell division.
Storage Condition and Buffer	Rabbit IgG in phosphate buffered saline , pH 7.4, 150mM NaCl, 0.02% sodium azide and 50% glycerol. Store at +4°C short term. Store at -20°C long term. Avoid freeze / thaw cycle.

**Histone H1.0 Antibody - Protein Information****Name** H1-0 ([HGNC:4714](#))**Function**

Histones H1 are necessary for the condensation of nucleosome chains into higher-order structures. The histones H1.0 are found in cells that are in terminal stages of differentiation or that have low

rates of cell division.

#### Cellular Location

Nucleus {ECO:0000255|PROSITE-ProRule:PRU00837, ECO:0000269|PubMed:18993075}.

Chromosome {ECO:0000255|PROSITE-ProRule:PRU00837, ECO:0000269|PubMed:18993075}.

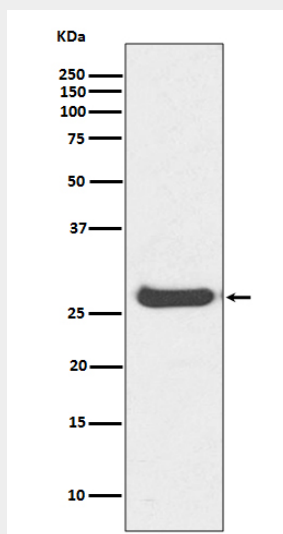
Note=The RNA edited version has been localized to nuclear speckles. During mitosis, it appears in the vicinity of condensed chromosomes

#### Histone H1.0 Antibody - Protocols

Provided below are standard protocols that you may find useful for product applications.

- [Western Blot](#)
- [Blocking Peptides](#)
- [Dot Blot](#)
- [Immunohistochemistry](#)
- [Immunofluorescence](#)
- [Immunoprecipitation](#)
- [Flow Cytometry](#)
- [Cell Culture](#)

#### Histone H1.0 Antibody - Images



Western blot analysis of Histone H1.0 expression in Human kidney lysate.