

**STAT1 alpha Antibody**  
**Rabbit mAb**  
**Catalog # AP90861****Specification**

---

**STAT1 alpha Antibody - Product Information**

Application	WB, IHC, FC, ICC, IP
Primary Accession	<a href="#">P42224</a>
Clonality	Monoclonal

**Other Names**

CANDF7; ISGF 3 ; Signal transducer and activator of transcription 1, 91kDa; Signal transducer and activator of transcription 1-alpha/beta; Stat1; STAT91; Transcription factor ISGF-3 components p91/p84;

Isotype	Rabbit IgG
Host	Rabbit
Calculated MW	87335 Da

**STAT1 alpha Antibody - Additional Information**

Dilution	WB~~1:1000 IHC~~1:100~500 FC~~1:10~50 ICC~~N/A IP~~N/A
Purification	Affinity-chromatography
Immunogen	A synthesized peptide derived from human STAT1 alpha
Description	The Stat1 transcription factor is activated in response to a large number of ligands and is essential for responsiveness to IFN- $\alpha$ and IFN- $\gamma$ . Phosphorylation of Stat1 at Tyr701 induces Stat1 dimerization, nuclear translocation, and DNA binding. The inappropriate activation of Stat1 occurs in many tumors.
Storage Condition and Buffer	Rabbit IgG in phosphate buffered saline , pH 7.4, 150mM NaCl, 0.02% sodium azide and 50% glycerol. Store at +4°C short term. Store at -20°C long term. Avoid freeze / thaw cycle.

**STAT1 alpha Antibody - Protein Information****Name** STAT1**Function**

Signal transducer and transcription activator that mediates cellular responses to interferons (IFNs), cytokine KITLG/SCF and other cytokines and other growth factors (PubMed:<a

href="http://www.uniprot.org/citations/12764129" target="\_blank">12764129</a>, PubMed:<a href="http://www.uniprot.org/citations/12855578" target="\_blank">12855578</a>, PubMed:<a href="http://www.uniprot.org/citations/15322115" target="\_blank">15322115</a>, PubMed:<a href="http://www.uniprot.org/citations/23940278" target="\_blank">23940278</a>, PubMed:<a href="http://www.uniprot.org/citations/34508746" target="\_blank">34508746</a>, PubMed:<a href="http://www.uniprot.org/citations/35568036" target="\_blank">35568036</a>, PubMed:<a href="http://www.uniprot.org/citations/9724754" target="\_blank">9724754</a>). Following type I IFN (IFN-alpha and IFN-beta) binding to cell surface receptors, signaling via protein kinases leads to activation of Jak kinases (TYK2 and JAK1) and to tyrosine phosphorylation of STAT1 and STAT2. The phosphorylated STATs dimerize and associate with ISGF3G/IRF-9 to form a complex termed ISGF3 transcription factor, that enters the nucleus (PubMed:<a href="http://www.uniprot.org/citations/28753426" target="\_blank">28753426</a>, PubMed:<a href="http://www.uniprot.org/citations/35568036" target="\_blank">35568036</a>). ISGF3 binds to the IFN stimulated response element (ISRE) to activate the transcription of IFN-stimulated genes (ISG), which drive the cell in an antiviral state (PubMed:<a href="http://www.uniprot.org/citations/28753426" target="\_blank">28753426</a>, PubMed:<a href="http://www.uniprot.org/citations/35568036" target="\_blank">35568036</a>). In response to type II IFN (IFN-gamma), STAT1 is tyrosine- and serine-phosphorylated (PubMed:<a href="http://www.uniprot.org/citations/26479788" target="\_blank">26479788</a>). It then forms a homodimer termed IFN-gamma-activated factor (GAF), migrates into the nucleus and binds to the IFN gamma activated sequence (GAS) to drive the expression of the target genes, inducing a cellular antiviral state (PubMed:<a href="http://www.uniprot.org/citations/8156998" target="\_blank">8156998</a>). Becomes activated in response to KITLG/SCF and KIT signaling (PubMed:<a href="http://www.uniprot.org/citations/15526160" target="\_blank">15526160</a>). May mediate cellular responses to activated FGFR1, FGFR2, FGFR3 and FGFR4 (PubMed:<a href="http://www.uniprot.org/citations/19088846" target="\_blank">19088846</a>). Following bacterial lipopolysaccharide (LPS)-induced TLR4 endocytosis, phosphorylated at Thr-749 by IKBKB which promotes binding of STAT1 to the 5'-TTTGAGGC-3' sequence in the ARID5A promoter, resulting in transcriptional activation of ARID5A and subsequent ARID5A-mediated stabilization of IL6 (PubMed:<a href="http://www.uniprot.org/citations/32209697" target="\_blank">32209697</a>). Phosphorylation at Thr-749 also promotes binding of STAT1 to the 5'-TTTGAGTC-3' sequence in the IL12B promoter and activation of IL12B transcription (PubMed:<a href="http://www.uniprot.org/citations/32209697" target="\_blank">32209697</a>). Involved in food tolerance in small intestine: associates with the Gasdermin-D, p13 cleavage product (13 kDa GSDMD) and promotes transcription of CIITA, inducing type 1 regulatory T (Tr1) cells in upper small intestine (By similarity).

### Cellular Location

Cytoplasm. Nucleus Note=Translocated into the nucleus upon tyrosine phosphorylation and dimerization, in response to IFN-gamma and signaling by activated FGFR1, FGFR2, FGFR3 or FGFR4 (PubMed:15322115). Monomethylation at Lys- 525 is required for phosphorylation at Tyr-701 and translocation into the nucleus (PubMed:28753426). Translocates into the nucleus in response to interferon-beta stimulation (PubMed:26479788)

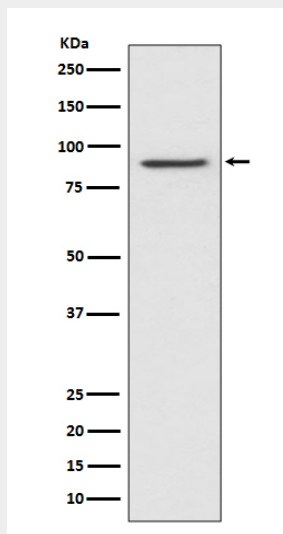
### STAT1 alpha Antibody - Protocols

Provided below are standard protocols that you may find useful for product applications.

- [Western Blot](#)
- [Blocking Peptides](#)
- [Dot Blot](#)
- [Immunohistochemistry](#)
- [Immunofluorescence](#)
- [Immunoprecipitation](#)
- [Flow Cytometry](#)

- [Cell Culture](#)

## STAT1 alpha Antibody - Images



Western blot analysis of STAT1 alpha expression in Hela cell lysate.