

**STAT5b Antibody**  
**Rabbit mAb**  
**Catalog # AP90880****Specification**

---

**STAT5b Antibody - Product Information**

Application	WB, IHC, ICC, IP
Primary Accession	<a href="#">P51692</a>
Reactivity	Rat
Clonality	Monoclonal
<b>Other Names</b>	
Signal transducer and activator of transcription 5B; STA5B; STAT5; Stat5b; Transcription factor STAT5B;	
Isotype	Rabbit IgG
Host	Rabbit
Calculated MW	89866 Da

**STAT5b Antibody - Additional Information**

Dilution	WB~~1:1000 IHC~~1:100~500 ICC~~N/A IP~~N/A
Purification	Affinity-chromatography
Immunogen	A synthesized peptide derived from human STAT5b
Description	Stat5 is activated in response to a wide variety of ligands including IL-2, GM-CSF, growth hormone and prolactin. Stat5 is constitutively active in some leukemic cell types. Phosphorylated Stat5 is found in some endothelial cells treated with IL-3, which suggests its involvement in angiogenesis and cell motility. Stat5a and Stat5b are independently regulated and activated in various cell types.
Storage Condition and Buffer	Rabbit IgG in phosphate buffered saline , pH 7.4, 150mM NaCl, 0.02% sodium azide and 50% glycerol. Store at +4°C short term. Store at -20°C long term. Avoid freeze / thaw cycle.

**STAT5b Antibody - Protein Information****Name** STAT5B**Function**

Carries out a dual function: signal transduction and activation of transcription (PubMed:&lt;a

href="http://www.uniprot.org/citations/29844444" target="\_blank">29844444</a>). Mediates cellular responses to the cytokine KITLG/SCF and other growth factors. Binds to the GAS element and activates PRL-induced transcription. Positively regulates hematopoietic/erythroid differentiation.

#### **Cellular Location**

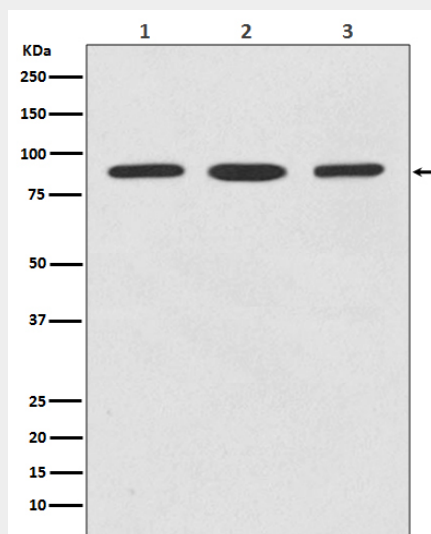
Cytoplasm. Nucleus. Note=Translocated into the nucleus in response to phosphorylation.

#### **STAT5b Antibody - Protocols**

Provided below are standard protocols that you may find useful for product applications.

- [Western Blot](#)
- [Blocking Peptides](#)
- [Dot Blot](#)
- [Immunohistochemistry](#)
- [Immunofluorescence](#)
- [Immunoprecipitation](#)
- [Flow Cytometry](#)
- [Cell Culture](#)

#### **STAT5b Antibody - Images**



Western blot analysis of STAT5b expression in (1) HeLa cell lysate; (2) 3T3 cell lysate; (3) C6 cell lysate.