

**JunB Antibody**  
**Rabbit mAb**  
**Catalog # AP90894****Specification**

---

**JunB Antibody - Product Information**

Application	WB, ICC, IP
Primary Accession	<a href="#">P17275</a>
Reactivity	Rat
Clonality	Monoclonal

**Other Names**

JunB; Jun B; Jun B proto oncogene; Transcription factor jun-B;

Isotype	Rabbit IgG
Host	Rabbit
Calculated MW	35879 Da

**JunB Antibody - Additional Information**

Dilution	WB~~1:1000 ICC~~N/A IP~~N/A
Purification	Affinity-chromatography
Immunogen	A synthesized peptide derived from human JunB
Description	JunB is a basic region, leucine zipper (bZIP) transcription factor belonging to the Jun family that includes c-Jun and JunD. Jun family members homodimerize or heterodimerize with Fos and ATF proteins to form a functional transcription factor AP-1 (activator protein, whose activity is regulated by a variety of physiological and pathological stimuli such as growth factors, infections, and stress signals.
Storage Condition and Buffer	Rabbit IgG in phosphate buffered saline , pH 7.4, 150mM NaCl, 0.02% sodium azide and 50% glycerol. Store at +4°C short term. Store at -20°C long term. Avoid freeze / thaw cycle.

**JunB Antibody - Protein Information****Name** JUNB**Function**

Transcription factor involved in regulating gene activity following the primary growth factor response. Binds to the DNA sequence 5'-TGA[GC]TCA-3'. Heterodimerizes with proteins of the FOS family to form an AP-1 transcription complex, thereby enhancing its DNA binding activity to an

AP-1 consensus sequence and its transcriptional activity (By similarity).

#### **Cellular Location**

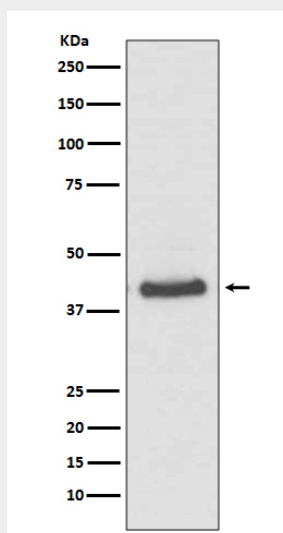
Nucleus.

#### **JunB Antibody - Protocols**

Provided below are standard protocols that you may find useful for product applications.

- [Western Blot](#)
- [Blocking Peptides](#)
- [Dot Blot](#)
- [Immunohistochemistry](#)
- [Immunofluorescence](#)
- [Immunoprecipitation](#)
- [Flow Cytometry](#)
- [Cell Culture](#)

#### **JunB Antibody - Images**



Western blot analysis of JunB expression in HeLa cell lysate.