

PAX2 Antibody
Rabbit mAb
Catalog # AP90905**Specification****PAX2 Antibody - Product Information**

Application	WB, IHC
Primary Accession	Q02962
Clonality	Monoclonal
Other Names	
Paired box 2; Paired box gene 2; paired box homeotic gene 2; paired box protein 2; Paired box protein Pax 2; Pax 2;	
Isotype	Rabbit IgG
Host	Rabbit
Calculated MW	44706 Da

PAX2 Antibody - Additional Information

Dilution	WB~~1:1000 IHC~~1:100~500
Purification	Affinity-chromatography
Immunogen	A synthesized peptide derived from human PAX2
Description	PAX2 is a transcription factor critically required during the development of the nervous and excretory systems, including the midbrain, hindbrain, spinal cord, eye, ear and urogenital tract. Probable transcription factor that may have a role in kidney cell differentiation. Has a critical role in the development of the urogenital tract, the eyes, and the CNS.
Storage Condition and Buffer	Rabbit IgG in phosphate buffered saline , pH 7.4, 150mM NaCl, 0.02% sodium azide and 50% glycerol. Store at +4°C short term. Store at -20°C long term. Avoid freeze / thaw cycle.

PAX2 Antibody - Protein Information**Name** PAX2**Function**

Transcription factor that may have a role in kidney cell differentiation (PubMed:24676634). Has a critical role in the development of the urogenital tract, the eyes, and the CNS.

Cellular Location

Nucleus.

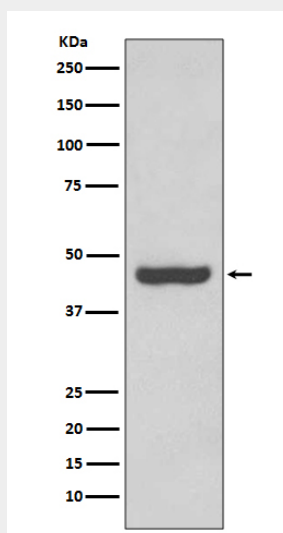
Tissue Location

Expressed in primitive cells of the kidney, ureter, eye, ear and central nervous system

PAX2 Antibody - Protocols

Provided below are standard protocols that you may find useful for product applications.

- [Western Blot](#)
- [Blocking Peptides](#)
- [Dot Blot](#)
- [Immunohistochemistry](#)
- [Immunofluorescence](#)
- [Immunoprecipitation](#)
- [Flow Cytometry](#)
- [Cell Culture](#)

PAX2 Antibody - Images

Western blot analysis of PAX2 expression in Human fetal kidney lysate.