

S100A10 Antibody (Center)
Purified Rabbit Polyclonal Antibody (Pab)
Catalog # AP9090c**Specification**

S100A10 Antibody (Center) - Product Information

Application	FC, IHC-P, WB,E
Primary Accession	P60903
Other Accession	Q6SQH4 , P04163 , P60902
Reactivity	Human
Predicted	Bovine, Pig, Rabbit
Host	Rabbit
Clonality	Polyclonal
Isotype	Rabbit IgG
Calculated MW	11203
Antigen Region	12-40

S100A10 Antibody (Center) - Additional Information**Gene ID** 6281**Other Names**

Protein S100-A10, Calpactin I light chain, Calpactin-1 light chain, Cellular ligand of annexin II, S100 calcium-binding protein A10, p10 protein, p11, S100A10, ANX2LG, CAL1L, CLP11

Target/Specificity

This S100A10 antibody is generated from rabbits immunized with a KLH conjugated synthetic peptide between 12-40 amino acids from the Central region of human S100A10.

Dilution

FC~~1:10~50

IHC-P~~1:50~100

WB~~1:8000

E~~Use at an assay dependent concentration.

Format

Purified polyclonal antibody supplied in PBS with 0.09% (W/V) sodium azide. This antibody is purified through a protein A column, followed by peptide affinity purification.

Storage

Maintain refrigerated at 2-8°C for up to 2 weeks. For long term storage store at -20°C in small aliquots to prevent freeze-thaw cycles.

Precautions

S100A10 Antibody (Center) is for research use only and not for use in diagnostic or therapeutic procedures.

S100A10 Antibody (Center) - Protein Information

Name S100A10

Synonyms ANX2LG, CAL1L, CLP11

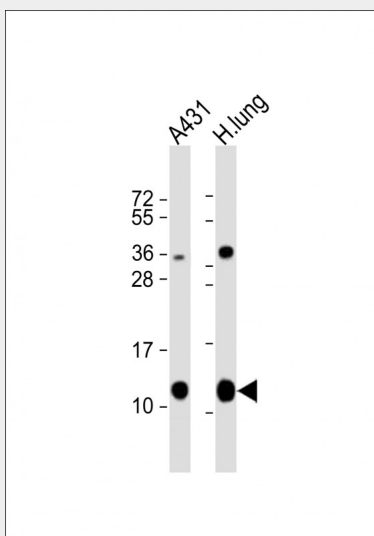
Function Because S100A10 induces the dimerization of ANXA2/p36, it may function as a regulator of protein phosphorylation in that the ANXA2 monomer is the preferred target (in vitro) of tyrosine-specific kinase.

S100A10 Antibody (Center) - Protocols

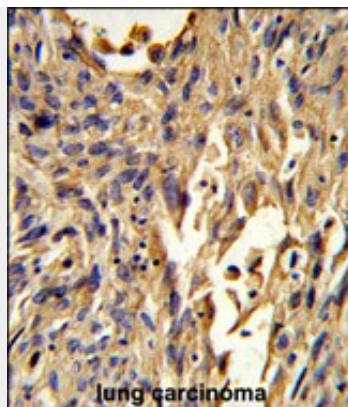
Provided below are standard protocols that you may find useful for product applications.

- [Western Blot](#)
- [Blocking Peptides](#)
- [Dot Blot](#)
- [Immunohistochemistry](#)
- [Immunofluorescence](#)
- [Immunoprecipitation](#)
- [Flow Cytometry](#)
- [Cell Culture](#)

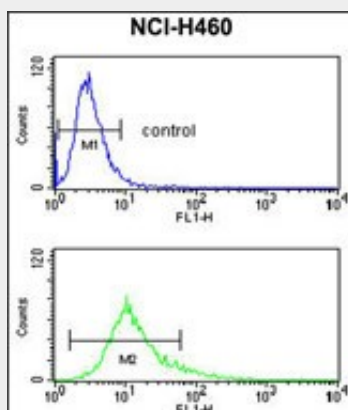
S100A10 Antibody (Center) - Images



All lanes : Anti-S100A10 Antibody (Center) at 1:8000 dilution Lane 1: A431 whole cell lysate Lane 2: human lung lysate Lysates/proteins at 20 µg per lane. Secondary Goat Anti-Rabbit IgG, (H+L), Peroxidase conjugated at 1/10000 dilution. Predicted band size : 11 kDa Blocking/Dilution buffer: 5% NFDM/TBST.



Formalin-fixed and paraffin-embedded human lung carcinoma reacted with S100A10 Antibody (Center), which was peroxidase-conjugated to the secondary antibody, followed by DAB staining. This data demonstrates the use of this antibody for immunohistochemistry; clinical relevance has not been evaluated.



S100A10 Antibody (Center) (Cat. #AP9090c) flow cytometry analysis of NCI-H460 cells (bottom histogram) compared to a negative control cell (top histogram). FITC-conjugated goat-anti-rabbit secondary antibodies were used for the analysis.

S100A10 Antibody (Center) - Background

The protein encoded by this gene is a member of the S100 family of proteins containing 2 EF-hand calcium-binding motifs. S100 proteins are localized in the cytoplasm and/or nucleus of a wide range of cells, and involved in the regulation of a number of cellular processes such as cell cycle progression and differentiation.

S100A10 Antibody (Center) - References

Landa, I., et al., PLoS Genet. 5 (9), E1000637 (2009)
Stemmler, S., et al., Int. J. Immunogenet. 36 (4), 217-222 (2009)