

MEKK3 Antibody
Rabbit mAb
Catalog # AP90917**Specification**

MEKK3 Antibody - Product Information

Application	WB, IHC, FC, ICC, IP
Primary Accession	Q99759
Reactivity	Rat
Clonality	Monoclonal
Other Names	
MAP/ERK kinase kinase 3; MAP3K3; MAPK/ERK kinase kinase 3; MAPKKK3; MEK kinase 3; MEKK 3; MEKK3; Mitogen activated protein kinase kinase kinase 3;	
Isotype	Rabbit IgG
Host	Rabbit
Calculated MW	70898 Da

MEKK3 Antibody - Additional Information

Dilution	WB~~1:1000 IHC~~1:100~500 FC~~1:10~50 ICC~~N/A IP~~N/A
Purification	Affinity-chromatography
Immunogen	A synthesized peptide derived from human MEKK3
Description	MAP kinase kinase kinase (MEKK3 or MAP3K3) is a serine/threonine protein kinase that activates SAPK and ERK via phosphorylation and activation of their respective MAP kinase kinases, SEK and MEK1/2. MEKK3 also stimulates MEK5 via activation of ERK5/BMK1, which is at least partly regulated by a direct interaction between MEK5 and MEKK3 via p67phox-Bem1p (PB1) protein-protein interaction domains found in both proteins.
Storage Condition and Buffer	Rabbit IgG in phosphate buffered saline , pH 7.4, 150mM NaCl, 0.02% sodium azide and 50% glycerol. Store at +4°C short term. Store at -20°C long term. Avoid freeze / thaw cycle.

MEKK3 Antibody - Protein Information**Name** MAP3K3

Synonyms MAPKKK3, MEKK3

Function

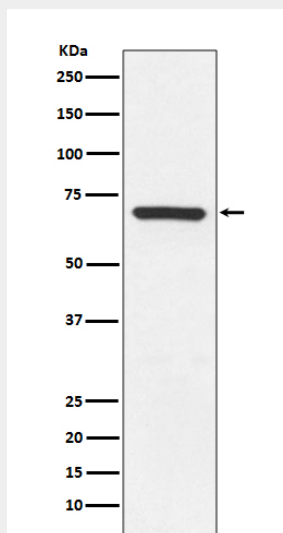
Component of a protein kinase signal transduction cascade. Mediates activation of the NF-kappa-B, AP1 and DDIT3 transcriptional regulators.

MEKK3 Antibody - Protocols

Provided below are standard protocols that you may find useful for product applications.

- [Western Blot](#)
- [Blocking Peptides](#)
- [Dot Blot](#)
- [Immunohistochemistry](#)
- [Immunofluorescence](#)
- [Immunoprecipitation](#)
- [Flow Cytometry](#)
- [Cell Culture](#)

MEKK3 Antibody - Images



Western blot analysis of MEKK3 expression in HeLa cell lysate.