

14-3-3 Theta Antibody
Rabbit mAb
Catalog # AP90920**Specification**

14-3-3 Theta Antibody - Product Information

Application	WB, FC, ICC
Primary Accession	P27348
Reactivity	Rat
Clonality	Monoclonal
Other Names	
14-3-3 protein T cell; 14-3-3 protein tau; 14-3-3 protein theta; IC5; Protein HS1;	
Isotype	Rabbit IgG
Host	Rabbit
Calculated MW	27764 Da

14-3-3 Theta Antibody - Additional Information

Dilution	WB~~1:1000 FC~~1:10~50 ICC~~N/A
Purification	Affinity-chromatography
Immunogen	A synthesized peptide derived from human 14-3-3 Theta
Description	Adapter protein implicated in the regulation of a large spectrum of both general and specialized signaling pathways. Binds to a large number of partners, usually by recognition of a phosphoserine or phosphothreonine motif. Binding generally results in the modulation of the activity of the binding partner.
Storage Condition and Buffer	Rabbit IgG in phosphate buffered saline , pH 7.4, 150mM NaCl, 0.02% sodium azide and 50% glycerol. Store at +4°C short term. Store at -20°C long term. Avoid freeze / thaw cycle.

14-3-3 Theta Antibody - Protein Information**Name** YWHAQ**Function**

Adapter protein implicated in the regulation of a large spectrum of both general and specialized signaling pathways. Binds to a large number of partners, usually by recognition of a phosphoserine or phosphothreonine motif. Binding generally results in the modulation of the activity of the binding partner. Negatively regulates the kinase activity of PDPK1.

Cellular Location

Cytoplasm. Note=In neurons, axonally transported to the nerve terminals

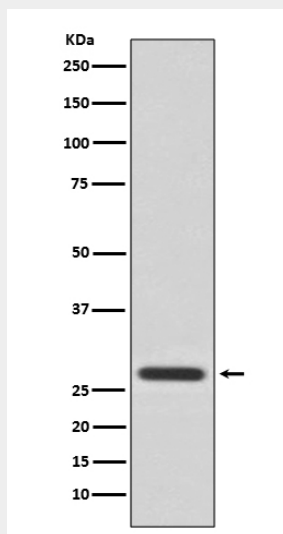
Tissue Location

Abundantly expressed in brain, heart and pancreas, and at lower levels in kidney and placenta. Up-regulated in the lumbar spinal cord from patients with sporadic amyotrophic lateral sclerosis (ALS) compared with controls, with highest levels of expression in individuals with predominant lower motor neuron involvement

14-3-3 Theta Antibody - Protocols

Provided below are standard protocols that you may find useful for product applications.

- [Western Blot](#)
- [Blocking Peptides](#)
- [Dot Blot](#)
- [Immunohistochemistry](#)
- [Immunofluorescence](#)
- [Immunoprecipitation](#)
- [Flow Cytometry](#)
- [Cell Culture](#)

14-3-3 Theta Antibody - Images

Western blot analysis of 14-3-3 Theta expression in HeLa cell lysate.