

**Phospho-Cdc6 (S54) Antibody**  
**Rabbit mAb**  
**Catalog # AP90926****Specification**

---

**Phospho-Cdc6 (S54) Antibody - Product Information**

Application	WB, ICC
Primary Accession	<a href="#">Q99741</a>
Clonality	Monoclonal
<b>Other Names</b>	
CDC6; CDC18L; CDC6-related protein; Cdc18-related protein; HsCDC6; HsCDC18; p62(cdc6);	
Isotype	Rabbit IgG
Host	Rabbit
Calculated MW	62720 Da

**Phospho-Cdc6 (S54) Antibody - Additional Information**

Dilution	WB~~1:1000 ICC~~N/A
Purification	Affinity-chromatography
Immunogen	A synthesized peptide derived from human Phospho-Cdc6 (S54)
Description	Involved in the initiation of DNA replication. Also participates in checkpoint controls that ensure DNA replication is completed before mitosis is initiated.Cdc6 has recently been shown to play an important role in the intra-S-phase p21 Waf1/Cip1-dependent DNA damage response. Both cdc6 and CDT1 are degraded by the ubiquitin proteasome pathway in response to DNA damage associated with re-replication.
Storage Condition and Buffer	Rabbit IgG in phosphate buffered saline , pH 7.4, 150mM NaCl, 0.02% sodium azide and 50% glycerol. Store at +4°C short term. Store at -20°C long term. Avoid freeze / thaw cycle.

**Phospho-Cdc6 (S54) Antibody - Protein Information****Name** CDC6**Synonyms** CDC18L**Function**

Involved in the initiation of DNA replication. Also participates in checkpoint controls that ensure DNA replication is completed before mitosis is initiated.

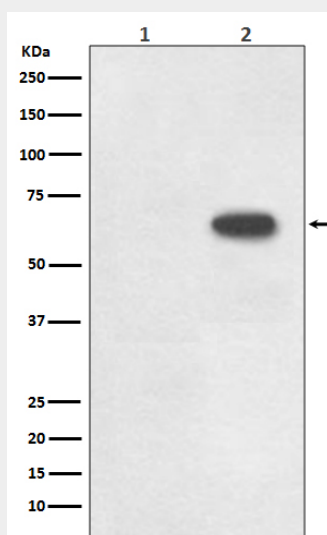
**Cellular Location**

Nucleus. Cytoplasm Note=The protein is nuclear in G1 and cytoplasmic in S-phase cells (PubMed:9566895).

**Phospho-Cdc6 (S54) Antibody - Protocols**

Provided below are standard protocols that you may find useful for product applications.

- [Western Blot](#)
- [Blocking Peptides](#)
- [Dot Blot](#)
- [Immunohistochemistry](#)
- [Immunofluorescence](#)
- [Immunoprecipitation](#)
- [Flow Cytometry](#)
- [Cell Culture](#)

**Phospho-Cdc6 (S54) Antibody - Images**

Western blot analysis of Phospho-Cdc6 (S54) expression in (1) Raji cell lysate; (2) Raji + FBS cell lysate.