

**Cdc6 Antibody**  
**Rabbit mAb**  
**Catalog # AP90929**

## Specification

---

### Cdc6 Antibody - Product Information

Application	WB, IHC, ICC
Primary Accession	<a href="#">Q99741</a>
Clonality	Monoclonal
<b>Other Names</b>	
CDC6; CDC18L; CDC6-related protein; Cdc18-related protein; HsCDC6; HsCDC18; p62(cdc6);	
Isotype	Rabbit IgG
Host	Rabbit
Calculated MW	62720 Da

### Cdc6 Antibody - Additional Information

Dilution	WB~~1:1000 IHC~~1:100~500 ICC~~N/A
Purification	Affinity-chromatography
Immunogen	A synthesized peptide derived from human Cdc6
Description	Involved in the initiation of DNA replication. Also participates in checkpoint controls that ensure DNA replication is completed before mitosis is initiated.Cdc6 has recently been shown to play an important role in the intra-S-phase p21 Waf1/Cip1-dependent DNA damage response. Both cdc6 and CDT1 are degraded by the ubiquitin proteasome pathway in response to DNA damage associated with re-replication.
Storage Condition and Buffer	Rabbit IgG in phosphate buffered saline , pH 7.4, 150mM NaCl, 0.02% sodium azide and 50% glycerol. Store at +4°C short term. Store at -20°C long term. Avoid freeze / thaw cycle.

### Cdc6 Antibody - Protein Information

**Name** CDC6

**Synonyms** CDC18L

#### Function

Involved in the initiation of DNA replication. Also participates in checkpoint controls that ensure

DNA replication is completed before mitosis is initiated.

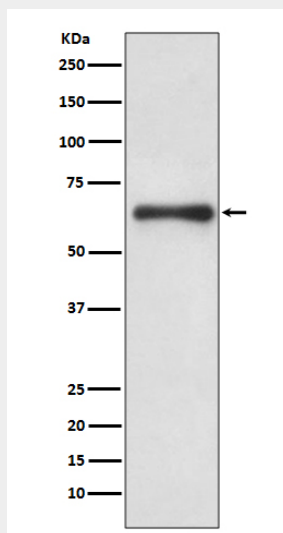
**Cellular Location**

Nucleus. Cytoplasm Note=The protein is nuclear in G1 and cytoplasmic in S-phase cells (PubMed:9566895).

**Cdc6 Antibody - Protocols**

Provided below are standard protocols that you may find useful for product applications.

- [Western Blot](#)
- [Blocking Peptides](#)
- [Dot Blot](#)
- [Immunohistochemistry](#)
- [Immunofluorescence](#)
- [Immunoprecipitation](#)
- [Flow Cytometry](#)
- [Cell Culture](#)

**Cdc6 Antibody - Images**

Western blot analysis of Cdc6 expression in HeLa cell lysate treated with hydroxyurea.