

**SUMO4 Antibody**  
**Rabbit mAb**  
**Catalog # AP90934****Specification**

---

**SUMO4 Antibody - Product Information**

Application	WB, FC, ICC, IP
Primary Accession	<a href="#">Q6EEV6</a>
Reactivity	Rat
Clonality	Monoclonal
<b>Other Names</b>	
IDDM5; SMT3H4; SUMO-4; dJ281H8.4;	
Isotype	Rabbit IgG
Host	Rabbit
Calculated MW	10685 Da

**SUMO4 Antibody - Additional Information**

Dilution	WB~~1:1000 FC~~1:10~50 ICC~~N/A IP~~N/A
Purification	Affinity-chromatography
Immunogen	A synthesized peptide derived from human SUMO4
Description	This gene is a member of the SUMO gene family. This family of genes encode small ubiquitin-related modifiers that are attached to proteins and control the target proteins' subcellular localization, stability, or activity. The protein described in this record is located in the cytoplasm and specifically modifies IKBA, leading to negative regulation of NF-kappa-B-dependent transcription of the IL12B gene.
Storage Condition and Buffer	Rabbit IgG in phosphate buffered saline , pH 7.4, 150mM NaCl, 0.02% sodium azide and 50% glycerol. Store at +4°C short term. Store at -20°C long term. Avoid freeze / thaw cycle.

**SUMO4 Antibody - Protein Information****Name** SUMO4**Synonyms** SMT3H4

**Function**

Ubiquitin-like protein which can be covalently attached to target lysines as a monomer. Does not seem to be involved in protein degradation and may modulate protein subcellular localization, stability or activity. Upon oxidative stress, conjugates to various anti-oxidant enzymes, chaperones, and stress defense proteins. May also conjugate to NFKBIA, TFAP2A and FOS, negatively regulating their transcriptional activity, and to NR3C1, positively regulating its transcriptional activity. Covalent attachment to its substrates requires prior activation by the E1 complex SAE1-SAE2 and linkage to the E2 enzyme UBE2I.

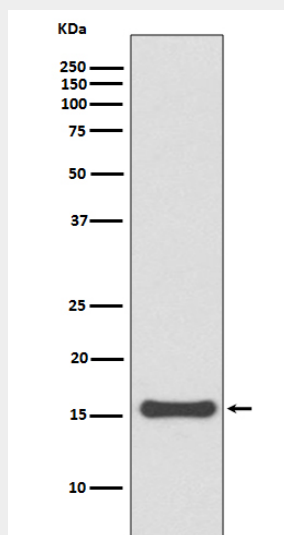
**Tissue Location**

Expressed mainly in adult and embryonic kidney. Expressed at various levels in immune tissues, with the highest expression in the lymph node and spleen.

**SUMO4 Antibody - Protocols**

Provided below are standard protocols that you may find useful for product applications.

- [Western Blot](#)
- [Blocking Peptides](#)
- [Dot Blot](#)
- [Immunohistochemistry](#)
- [Immunofluorescence](#)
- [Immunoprecipitation](#)
- [Flow Cytometry](#)
- [Cell Culture](#)

**SUMO4 Antibody - Images**

Western blot analysis of SUMO4 expression in 293T cell lysate.