

CDC45 Antibody
Rabbit mAb
Catalog # AP90935

Specification

CDC45 Antibody - Product Information

Application	WB, IHC, FC, ICC
Primary Accession	O75419
Reactivity	Rat
Clonality	Monoclonal
Other Names	
CDC45L; CDC45L2; PORC-PI-1; CDC45;	

Isotype	Rabbit IgG
Host	Rabbit
Calculated MW	65569 Da

CDC45 Antibody - Additional Information

Dilution	WB~~1:1000 IHC~~1:100~500 FC~~1:10~50 ICC~~N/A
Purification	Affinity-chromatography
Immunogen	A synthesized peptide derived from human CDC45
Description	The protein encoded by this gene was identified by its strong similarity with <i>Saccharomyces cerevisiae</i> Cdc45, an essential protein required to the initiation of DNA replication. Cdc45 is a member of the highly conserved multiprotein complex including Cdc6/Cdc18, the minichromosome maintenance proteins (MCMs) and DNA polymerase, which is important for early steps of DNA replication in eukaryotes.
Storage Condition and Buffer	Rabbit IgG in phosphate buffered saline , pH 7.4, 150mM NaCl, 0.02% sodium azide and 50% glycerol. Store at +4°C short term. Store at -20°C long term. Avoid freeze / thaw cycle.

CDC45 Antibody - Protein Information

Name CDC45 ([HGNC:1739](#))

Synonyms CDC45L, CDC45L2

Function

Required for initiation of chromosomal DNA replication. Core component of CDC45-MCM-GINS (CMG) helicase, the molecular machine that unwinds template DNA during replication, and around which the replisome is built.

Cellular Location

Nucleus. Chromosome. Note=Associates with chromatin

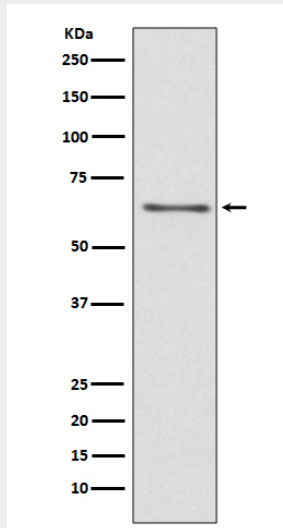
Tissue Location

Widely expressed, highest levels are found in adult testis and thymus and in fetal liver

CDC45 Antibody - Protocols

Provided below are standard protocols that you may find useful for product applications.

- [Western Blot](#)
- [Blocking Peptides](#)
- [Dot Blot](#)
- [Immunohistochemistry](#)
- [Immunofluorescence](#)
- [Immunoprecipitation](#)
- [Flow Cytometry](#)
- [Cell Culture](#)

CDC45 Antibody - Images

Western blot analysis of CDC45 expression in Jurkat cell lysate.