

CDC5 Antibody
Rabbit mAb
Catalog # AP90936

Specification

CDC5 Antibody - Product Information

Application	WB, IHC, ICC
Primary Accession	Q99459
Reactivity	Rat
Clonality	Monoclonal

Other Names

CDC5; CEF1; PCDC5RP; CDC5-LIKE; dJ319D22.1; CDC5L;

Isotype	Rabbit IgG
Host	Rabbit
Calculated MW	92251 Da

CDC5 Antibody - Additional Information

Dilution	WB~~1:1000 IHC~~1:100~500 ICC~~N/A
Purification	Affinity-chromatography
Immunogen	A synthesized peptide derived from human CDC5
Description	The protein encoded by this gene shares a significant similarity with Schizosaccharomyces pombe cdc5 gene product, which is a cell cycle regulator important for G2/M transition. This protein has been demonstrated to act as a positive regulator of cell cycle G2/M progression. It was also found to be an essential component of a non-snRNA spliceosome, which contains at least five additional protein factors and is required for the second catalytic step of pre-mRNA splicing.
Storage Condition and Buffer	Rabbit IgG in phosphate buffered saline , pH 7.4, 150mM NaCl, 0.02% sodium azide and 50% glycerol. Store at +4°C short term. Store at -20°C long term. Avoid freeze / thaw cycle.

CDC5 Antibody - Protein Information

Name CDC5L

Synonyms KIAA0432, PCDC5RP

Function

DNA-binding protein involved in cell cycle control. May act as a transcription activator. Plays a role in pre-mRNA splicing as core component of precatalytic, catalytic and postcatalytic spliceosomal complexes (PubMed:11991638, PubMed:20176811, PubMed:28076346, PubMed:28502770, PubMed:29301961, PubMed:29360106, PubMed:29361316, PubMed:30705154, PubMed:30728453). Component of the PRP19-CDC5L complex that forms an integral part of the spliceosome and is required for activating pre-mRNA splicing. The PRP19-CDC5L complex may also play a role in the response to DNA damage (DDR) (PubMed:20176811). As a component of the minor spliceosome, involved in the splicing of U12- type introns in pre-mRNAs (Probable).

Cellular Location

Nucleus. Nucleus speckle. Cytoplasm Note=May shuttle between cytoplasm and nucleus

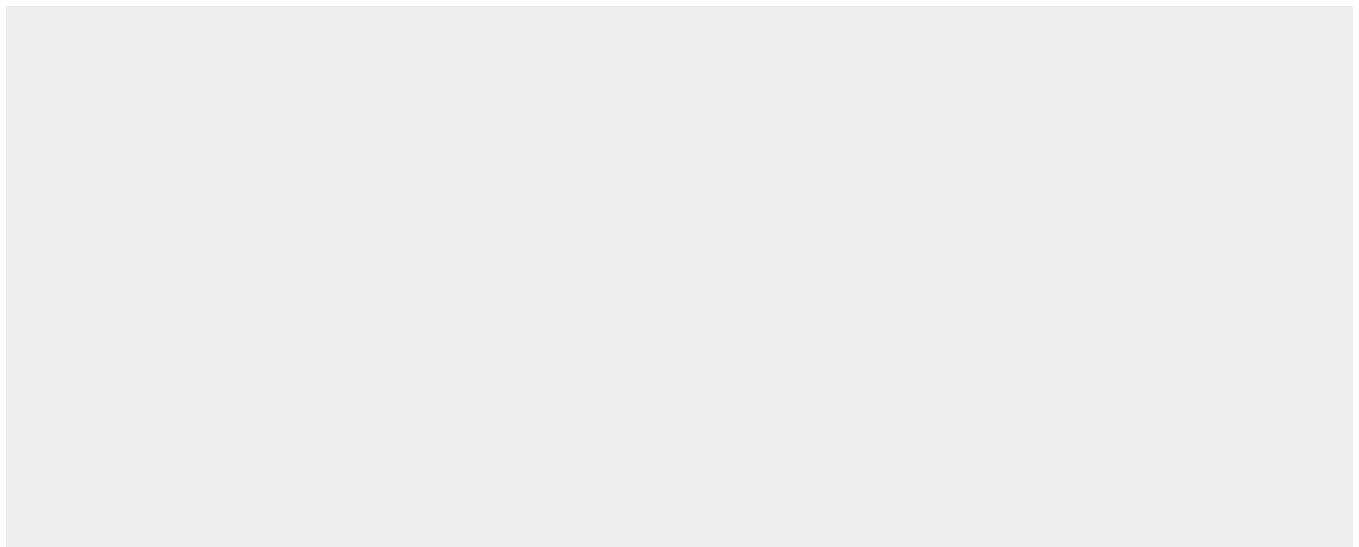
Tissue Location

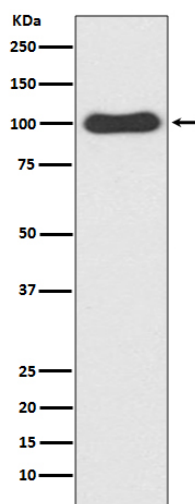
Ubiquitously expressed in both fetal and adult tissues.

CDC5 Antibody - Protocols

Provided below are standard protocols that you may find useful for product applications.

- [Western Blot](#)
- [Blocking Peptides](#)
- [Dot Blot](#)
- [Immunohistochemistry](#)
- [Immunofluorescence](#)
- [Immunoprecipitation](#)
- [Flow Cytometry](#)
- [Cell Culture](#)

CDC5 Antibody - Images



Western blot analysis of CDC5 expression in HeLa cell lysate.