

**Cdc27/APC3 Antibody**  
**Rabbit mAb**  
**Catalog # AP90937****Specification**

---

**Cdc27/APC3 Antibody - Product Information**

Application	WB
Primary Accession	<a href="#">P30260</a>
Reactivity	Rat
Clonality	Monoclonal
<b>Other Names</b>	
CDC27Hs; Cell division cycle protein 27 homolog; HNUC; APC3; ANAPC3;	
Isotype	Rabbit IgG
Host	Rabbit
Calculated MW	91867 Da

**Cdc27/APC3 Antibody - Additional Information**

Dilution	WB~~1:1000
Purification	Affinity-chromatography
Immunogen	A synthesized peptide derived from human Cdc27/APC3
Description	The protein encoded by this gene shares strong similarity with <i>Saccharomyces cerevisiae</i> protein Cdc27, and the gene product of <i>Schizosaccharomyces pombe</i> nuc 2. This protein is a component of anaphase-promoting complex (APC), which is composed of eight protein subunits and highly conserved in eucaryotic cells. APC catalyzes the formation of cyclin B-ubiquitin conjugate that is responsible for the ubiquitin-mediated proteolysis of B-type cyclins.
Storage Condition and Buffer	Rabbit IgG in phosphate buffered saline , pH 7.4, 150mM NaCl, 0.02% sodium azide and 50% glycerol. Store at +4°C short term. Store at -20°C long term. Avoid freeze / thaw cycle.

**Cdc27/APC3 Antibody - Protein Information****Name** CDC27**Synonyms** ANAPC3, D0S1430E, D17S978E**Function**

Component of the anaphase promoting complex/cyclosome (APC/C), a cell cycle-regulated E3

ubiquitin ligase that controls progression through mitosis and the G1 phase of the cell cycle (PubMed:<a href="http://www.uniprot.org/citations/18485873" target="\_blank">18485873</a>). The APC/C complex acts by mediating ubiquitination and subsequent degradation of target proteins: it mainly mediates the formation of 'Lys-11'-linked polyubiquitin chains and, to a lower extent, the formation of 'Lys-48'- and 'Lys-63'-linked polyubiquitin chains (PubMed:<a href="http://www.uniprot.org/citations/18485873" target="\_blank">18485873</a>). The APC/C complex catalyzes assembly of branched 'Lys-11'-/'Lys-48'-linked branched ubiquitin chains on target proteins (PubMed:<a href="http://www.uniprot.org/citations/29033132" target="\_blank">29033132</a>).

#### Cellular Location

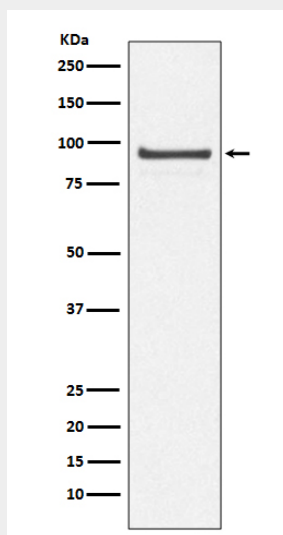
Nucleus. Cytoplasm, cytoskeleton, spindle

#### Cdc27/APC3 Antibody - Protocols

Provided below are standard protocols that you may find useful for product applications.

- [Western Blot](#)
- [Blocking Peptides](#)
- [Dot Blot](#)
- [Immunohistochemistry](#)
- [Immunofluorescence](#)
- [Immunoprecipitation](#)
- [Flow Cytometry](#)
- [Cell Culture](#)

#### Cdc27/APC3 Antibody - Images



Western blot analysis of Cdc27/APC3 expression in 293T cell lysate.