

**NOTCH4 Antibody**  
**Rabbit mAb**  
**Catalog # AP90938**

## Specification

---

### NOTCH4 Antibody - Product Information

Application	WB, FC
Primary Accession	<a href="#">Q99466</a>
Clonality	Monoclonal
<b>Other Names</b>	
NOTC4; hNotch4; INT3; Notch homolog 4;	
Isotype	Rabbit IgG
Host	Rabbit
Calculated MW	209622 Da

### NOTCH4 Antibody - Additional Information

Dilution	WB~~1:1000 FC~~1:10~50
Purification	Affinity-chromatography
Immunogen	A synthesized peptide derived from human NOTCH4
Description	Functions as a receptor for membrane-bound ligands Jagged1, Jagged2 and Delta1 to regulate cell-fate determination. Upon ligand activation through the released notch intracellular domain (NICD) it forms a transcriptional activator complex with RBPJ/RBPSUH and activates genes of the enhancer of split locus. Affects the implementation of differentiation, proliferation and apoptotic programs. May regulate branching morphogenesis in the developing vascular system (By similarity).
Storage Condition and Buffer	Rabbit IgG in phosphate buffered saline , pH 7.4, 150mM NaCl, 0.02% sodium azide and 50% glycerol. Store at +4°C short term. Store at -20°C long term. Avoid freeze / thaw cycle.

### NOTCH4 Antibody - Protein Information

**Name** NOTCH4 ([HGNC:7884](#))

**Synonyms** INT3

**Function**

Functions as a receptor for membrane-bound ligands Jagged1, Jagged2 and Delta1 to regulate cell-fate determination. Upon ligand activation through the released notch intracellular domain (NICD) it forms a transcriptional activator complex with RBPJ/RBPSUH and activates genes of the enhancer of split locus. Affects the implementation of differentiation, proliferation and apoptotic programs. May regulate branching morphogenesis in the developing vascular system (By similarity).

**Cellular Location**

Cell membrane; Single-pass type I membrane protein

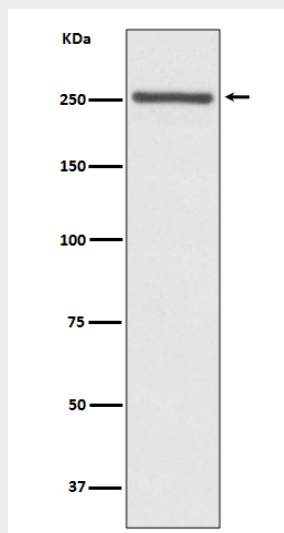
**Tissue Location**

Highly expressed in the heart, moderately in the lung and placenta and at low levels in the liver, skeletal muscle, kidney, pancreas, spleen, lymph node, thymus, bone marrow and fetal liver. No expression was seen in adult brain or peripheral blood leukocytes

**NOTCH4 Antibody - Protocols**

Provided below are standard protocols that you may find useful for product applications.

- [Western Blot](#)
- [Blocking Peptides](#)
- [Dot Blot](#)
- [Immunohistochemistry](#)
- [Immunofluorescence](#)
- [Immunoprecipitation](#)
- [Flow Cytometry](#)
- [Cell Culture](#)

**NOTCH4 Antibody - Images**

Western blot analysis of NOTCH4 expression in Mouse lung lysate.