

Hsp105 Antibody
Rabbit mAb
Catalog # AP90942**Specification**

Hsp105 Antibody - Product Information

Application	WB, IHC, ICC, IP
Primary Accession	Q92598
Reactivity	Rat
Clonality	Monoclonal
Other Names	
Antigen NY-CO-25; Heat shock protein 105 kDa; HS105; HSP105; HSP105A; HSP105B; HSP110; HSPH1;	
Isotype	Rabbit IgG
Host	Rabbit
Calculated MW	96865 Da

Hsp105 Antibody - Additional Information

Dilution	WB~~1:1000 IHC~~1:100~500 ICC~~N/A IP~~N/A
Purification	Affinity-chromatography
Immunogen	A synthesized peptide derived from human Hsp105
Description	HSP105 a molecular chaperone of the heat shock protein 70 family. Has ATPase activity. Expressed at especially high levels in mammalian brain and has been shown to suppress apoptosis in neuronal cells and to prevent the aggregation of proteins following heat shock. Known to interact with a variety of proteins including alpha-tubulin and the androgen receptor.
Storage Condition and Buffer	Rabbit IgG in phosphate buffered saline , pH 7.4, 150mM NaCl, 0.02% sodium azide and 50% glycerol. Store at +4°C short term. Store at -20°C long term. Avoid freeze / thaw cycle.

Hsp105 Antibody - Protein Information**Name** HSPH1**Synonyms** HSP105, HSP110, KIAA0201**Function**

Acts as a nucleotide-exchange factor (NEF) for chaperone proteins HSPA1A and HSPA1B, promoting the release of ADP from HSPA1A/B thereby triggering client/substrate protein release (PubMed:24318877). Prevents the aggregation of denatured proteins in cells under severe stress, on which the ATP levels decrease markedly. Inhibits HSPA8/HSC70 ATPase and chaperone activities (By similarity).

Cellular Location

Cytoplasm.

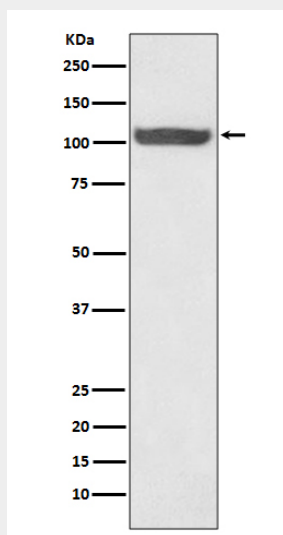
Tissue Location

Highly expressed in testis. Present at lower levels in most brain regions, except cerebellum. Overexpressed in cancer cells.

Hsp105 Antibody - Protocols

Provided below are standard protocols that you may find useful for product applications.

- [Western Blot](#)
- [Blocking Peptides](#)
- [Dot Blot](#)
- [Immunohistochemistry](#)
- [Immunofluorescence](#)
- [Immunoprecipitation](#)
- [Flow Cytometry](#)
- [Cell Culture](#)

Hsp105 Antibody - Images

Western blot analysis of Hsp105 expression in HeLa cell lysate.