

**UBA1 Antibody**  
**Rabbit mAb**  
**Catalog # AP90948**

## Specification

---

### UBA1 Antibody - Product Information

Application	WB, IHC, FC, ICC
Primary Accession	<a href="#">P22314</a>
Reactivity	Rat
Clonality	Monoclonal
<b>Other Names</b>	
GXP1; MGC4781; POC20; GXP1; SMAX2; UBA1; UBE1;	

Isotype	Rabbit IgG
Host	Rabbit
Calculated MW	117849 Da

### UBA1 Antibody - Additional Information

Dilution	WB~~1:1000 IHC~~1:100~500 FC~~1:10~50 ICC~~N/A
Purification	Affinity-chromatography
Immunogen	A synthesized peptide derived from human UBA1
Description	Catalyzes the first step in ubiquitin conjugation to mark cellular proteins for degradation through the ubiquitin-proteasome system. Activates ubiquitin by first adenylating its C-terminal glycine residue with ATP, and thereafter linking this residue to the side chain of a cysteine residue in E1, yielding a ubiquitin-E1 thioester and free AMP.
Storage Condition and Buffer	Rabbit IgG in phosphate buffered saline , pH 7.4, 150mM NaCl, 0.02% sodium azide and 50% glycerol. Store at +4°C short term. Store at -20°C long term. Avoid freeze / thaw cycle.

### UBA1 Antibody - Protein Information

**Name** UBA1

**Synonyms** A1S9T, UBE1

#### Function

Catalyzes the first step in ubiquitin conjugation to mark cellular proteins for degradation through

the ubiquitin-proteasome system (PubMed:<a href="http://www.uniprot.org/citations/1447181" target="\_blank">1447181</a>, PubMed:<a href="http://www.uniprot.org/citations/1606621" target="\_blank">1606621</a>, PubMed:<a href="http://www.uniprot.org/citations/33108101" target="\_blank">33108101</a>). Activates ubiquitin by first adenylating its C-terminal glycine residue with ATP, and thereafter linking this residue to the side chain of a cysteine residue in E1, yielding a ubiquitin-E1 thioester and free AMP (PubMed:<a href="http://www.uniprot.org/citations/1447181" target="\_blank">1447181</a>). Essential for the formation of radiation-induced foci, timely DNA repair and for response to replication stress. Promotes the recruitment of TP53BP1 and BRCA1 at DNA damage sites (PubMed:<a href="http://www.uniprot.org/citations/22456334" target="\_blank">22456334</a>).

#### Cellular Location

Cytoplasm. Mitochondrion. Nucleus [Isoform 2]: Cytoplasm

#### Tissue Location

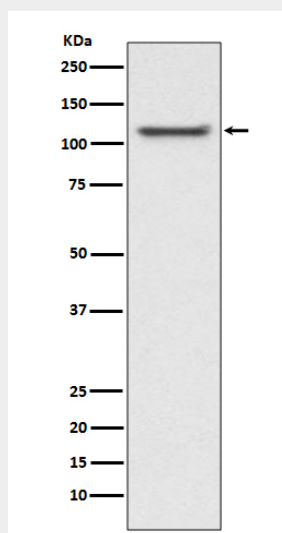
Detected in erythrocytes (at protein level). Ubiquitous.

### UBA1 Antibody - Protocols

Provided below are standard protocols that you may find useful for product applications.

- [Western Blot](#)
- [Blocking Peptides](#)
- [Dot Blot](#)
- [Immunohistochemistry](#)
- [Immunofluorescence](#)
- [Immunoprecipitation](#)
- [Flow Cytometry](#)
- [Cell Culture](#)

### UBA1 Antibody - Images



Western blot analysis of UBA1 expression in Jurkat cell lysate.