

Hsp20 Antibody
Rabbit mAb
Catalog # AP90949**Specification**

Hsp20 Antibody - Product Information

Application	WB, IHC, FC
Primary Accession	O14558
Reactivity	Rat
Clonality	Monoclonal

Other Names

HSPB6; HEL55; Hsp20; Heat-shock 20 kDa like-protein p20;

Isotype	Rabbit IgG
Host	Rabbit
Calculated MW	17136 Da

Hsp20 Antibody - Additional Information

Dilution	WB~~1:1000 IHC~~1:100~500 FC~~1:10~50
Purification	Affinity-chromatography
Immunogen	A synthesized peptide derived from human Hsp20
Description	HSP20 a small heat shock protein of the HSP20 family. Note: This description may include information from UniProtKB.
Storage Condition and Buffer	Rabbit IgG in phosphate buffered saline , pH 7.4, 150mM NaCl, 0.02% sodium azide and 50% glycerol. Store at +4°C short term. Store at -20°C long term. Avoid freeze / thaw cycle.

Hsp20 Antibody - Protein Information**Name** HSPB6**Function**

Small heat shock protein which functions as a molecular chaperone probably maintaining denatured proteins in a folding- competent state. Seems to have versatile functions in various biological processes. Plays a role in regulating muscle function such as smooth muscle vasorelaxation and cardiac myocyte contractility. May regulate myocardial angiogenesis implicating KDR. Overexpression mediates cardioprotection and angiogenesis after induced damage. Stabilizes monomeric YWHAZ thereby supporting YWHAZ chaperone-like activity.

Cellular Location

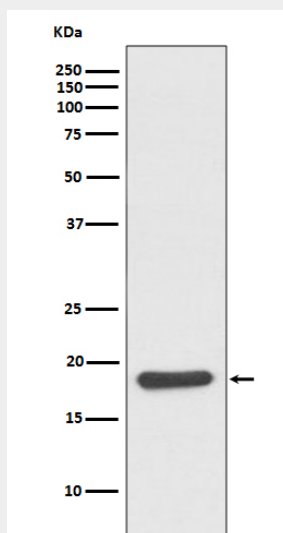
Cytoplasm. Nucleus. Secreted Note=Translocates to nuclear foci during heat shock

Hsp20 Antibody - Protocols

Provided below are standard protocols that you may find useful for product applications.

- [Western Blot](#)
- [Blocking Peptides](#)
- [Dot Blot](#)
- [Immunohistochemistry](#)
- [Immunofluorescence](#)
- [Immunoprecipitation](#)
- [Flow Cytometry](#)
- [Cell Culture](#)

Hsp20 Antibody - Images



Western blot analysis of Hsp20 expression in mouse skeletal muscle lysate.