

CDCA3 Antibody
Rabbit mAb
Catalog # AP90951**Specification**

CDCA3 Antibody - Product Information

Application	WB, ICC
Primary Accession	Q99618
Reactivity	Rat
Clonality	Monoclonal

Other Names

Cell division cycle-associated protein 3; Trigger of mitotic entry protein 1; TOME-1; Gene-rich cluster protein C8; CDCA3; C8; GRCC8; TOME1;

Isotype	Rabbit IgG
Host	Rabbit
Calculated MW	28998 Da

CDCA3 Antibody - Additional Information

Dilution	WB~~1:1000 ICC~~N/A
Purification	Affinity-chromatography
Immunogen	A synthesized peptide derived from human CDCA3
Description	F-box-like protein which is required for entry into mitosis. Acts by participating in E3 ligase complexes that mediate the ubiquitination and degradation of WEE1 kinase at G2/M phase (By similarity). Rabbit IgG in phosphate buffered saline , pH 7.4, 150mM NaCl, 0.02% sodium azide and 50% glycerol. Store at +4°C short term. Store at -20°C long term. Avoid freeze / thaw cycle.
Storage Condition and Buffer	

CDCA3 Antibody - Protein Information

Name CDCA3

Synonyms C8, GRCC8, TOME1

Function

F-box-like protein which is required for entry into mitosis. Acts by participating in E3 ligase complexes that mediate the ubiquitination and degradation of WEE1 kinase at G2/M phase (By similarity).

Cellular Location

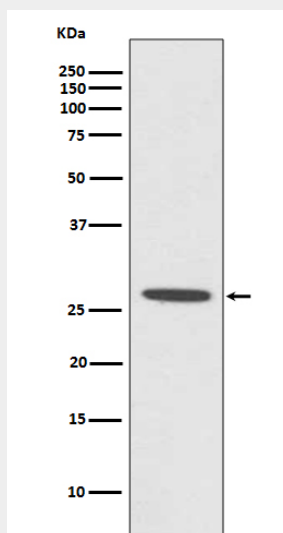
Cytoplasm, cytosol.

CDCA3 Antibody - Protocols

Provided below are standard protocols that you may find useful for product applications.

- [Western Blot](#)
- [Blocking Peptides](#)
- [Dot Blot](#)
- [Immunohistochemistry](#)
- [Immunofluorescence](#)
- [Immunoprecipitation](#)
- [Flow Cytometry](#)
- [Cell Culture](#)

CDCA3 Antibody - Images



Western blot analysis of CDCA3 expression in MCF7 cell lysate.