

Hsp47 Antibody
Rabbit mAb
Catalog # AP90954**Specification**

Hsp47 Antibody - Product Information

Application	WB, IHC
Primary Accession	P50454
Reactivity	Rat
Clonality	Monoclonal
Other Names	
CBP1; CBP2; OI10; gp46; AsTP3; HSP47; PIG14; PPR0M; RA-A47; SERPINH2;	
Isotype	Rabbit IgG
Host	Rabbit
Calculated MW	46441 Da

Hsp47 Antibody - Additional Information

Dilution	WB~~1:1000 IHC~~1:100~500
Purification	Affinity-chromatography
Immunogen	A synthesized peptide derived from human Hsp47
Description	This gene encodes a member of the serpin superfamily of serine proteinase inhibitors. The encoded protein is localized to the endoplasmic reticulum and plays a role in collagen biosynthesis as a collagen-specific molecular chaperone. Autoantibodies to the encoded protein have been found in patients with rheumatoid arthritis.
Storage Condition and Buffer	Rabbit IgG in phosphate buffered saline , pH 7.4, 150mM NaCl, 0.02% sodium azide and 50% glycerol. Store at +4°C short term. Store at -20°C long term. Avoid freeze / thaw cycle.

Hsp47 Antibody - Protein Information**Name** SERPINH1**Synonyms** CBP1, CBP2, HSP47, SERPINH2**Function**

Binds specifically to collagen. Could be involved as a chaperone in the biosynthetic pathway of collagen.

Cellular Location

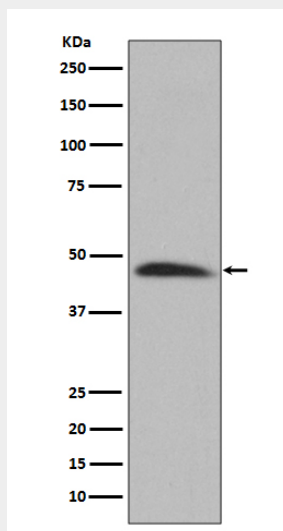
Endoplasmic reticulum lumen.

Hsp47 Antibody - Protocols

Provided below are standard protocols that you may find useful for product applications.

- [Western Blot](#)
- [Blocking Peptides](#)
- [Dot Blot](#)
- [Immunohistochemistry](#)
- [Immunofluorescence](#)
- [Immunoprecipitation](#)
- [Flow Cytometry](#)
- [Cell Culture](#)

Hsp47 Antibody - Images



Western blot analysis of Hsp47 expression in HeLa cell lysate.