

**CDC34 Antibody**  
**Rabbit mAb**  
**Catalog # AP90955****Specification**

---

**CDC34 Antibody - Product Information**

Application	WB, FC, ICC, IP
Primary Accession	<a href="#">P49427</a>
Reactivity	Rat
Clonality	Monoclonal
<b>Other Names</b>	
CDC34; Cell division cycle 34; UBC3; UBCH3; Ubiquitin-protein ligase R1; UBE2R1; E2-CDC34; Ubiquitin carrier protein;	
Isotype	Rabbit IgG
Host	Rabbit
Calculated MW	26737 Da

**CDC34 Antibody - Additional Information**

Dilution	WB~~1:1000 FC~~1:10~50 ICC~~N/A IP~~N/A
Purification	Affinity-chromatography
Immunogen	A synthesized peptide derived from human CDC34
Description	Involved in ubiquitin conjugation and degradation of CREM isoform ICERIIgamma and ATF15 resulting in abrogation of ICERIIgamma- and ATF5-mediated repression of cAMP-induced transcription during both meiotic and mitotic cell cycles. Involved in the regulation of the cell cycle G2/M phase through its targeting of the WEE1 kinase for ubiquitination and degradation.
Storage Condition and Buffer	Rabbit IgG in phosphate buffered saline , pH 7.4, 150mM NaCl, 0.02% sodium azide and 50% glycerol. Store at +4°C short term. Store at -20°C long term. Avoid freeze / thaw cycle.

**CDC34 Antibody - Protein Information****Name** CDC34**Synonyms** UBCH3, UBE2R1

### Function

E2 ubiquitin-conjugating enzyme that accepts ubiquitin from an E1 ubiquitin-activating protein, and catalyzes its covalent attachment to other proteins by an E3 ubiquitin-protein ligase complex (PubMed:<a href="http://www.uniprot.org/citations/10329681" target="\_blank">10329681</a>, PubMed:<a href="http://www.uniprot.org/citations/17588522" target="\_blank">17588522</a>, PubMed:<a href="http://www.uniprot.org/citations/20061386" target="\_blank">20061386</a>, PubMed:<a href="http://www.uniprot.org/citations/38326650" target="\_blank">38326650</a>). In vitro catalyzes 'Lys-48'-linked polyubiquitination (PubMed:<a href="http://www.uniprot.org/citations/22496338" target="\_blank">22496338</a>). Cooperates with the E2 UBCH5C and the SCF(FBXW11) E3 ligase complex for the polyubiquitination of NFKBIA leading to its subsequent proteasomal degradation (PubMed:<a href="http://www.uniprot.org/citations/10329681" target="\_blank">10329681</a>, PubMed:<a href="http://www.uniprot.org/citations/10918611" target="\_blank">10918611</a>, PubMed:<a href="http://www.uniprot.org/citations/17698585" target="\_blank">17698585</a>). Performs ubiquitin chain elongation building ubiquitin chains from the UBE2D3-primed NFKBIA-linked ubiquitin. UBE2D3 acts as an initiator E2, priming the phosphorylated NFKBIA target at positions 'Lys-21' and/or 'Lys-22' with a monoubiquitin. Cooperates with the SCF(SKP2) E3 ligase complex to regulate cell proliferation through ubiquitination and degradation of MYBL2 and KIP1 (PubMed:<a href="http://www.uniprot.org/citations/10871850" target="\_blank">10871850</a>, PubMed:<a href="http://www.uniprot.org/citations/15652359" target="\_blank">15652359</a>, PubMed:<a href="http://www.uniprot.org/citations/19112177" target="\_blank">19112177</a>). Involved in ubiquitin conjugation and degradation of CREM isoform ICERIIgamma and ATF15 resulting in abrogation of ICERIIgamma- and ATF5-mediated repression of cAMP-induced transcription during both meiotic and mitotic cell cycles. Involved in the regulation of the cell cycle G2/M phase through its targeting of the WEE1 kinase for ubiquitination and degradation (PubMed:<a href="http://www.uniprot.org/citations/19126550" target="\_blank">19126550</a>). Also involved in the degradation of beta-catenin (PubMed:<a href="http://www.uniprot.org/citations/12037680" target="\_blank">12037680</a>). Is target of human herpes virus 1 protein ICP0, leading to ICP0-dependent dynamic interaction with proteasomes (PubMed:<a href="http://www.uniprot.org/citations/11805320" target="\_blank">11805320</a>, PubMed:<a href="http://www.uniprot.org/citations/12060736" target="\_blank">12060736</a>).

### Cellular Location

Cytoplasm. Nucleus. Note=The phosphorylation of the C-terminal tail plays an important role in mediating nuclear localization. Colocalizes with beta-tubulin on mitotic spindles in anaphase

### Tissue Location

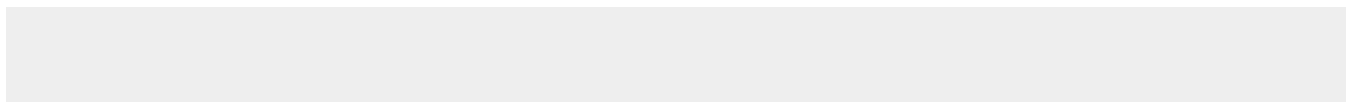
Expressed in testes during spermatogenesis to regulate repression of cAMP-induced transcription

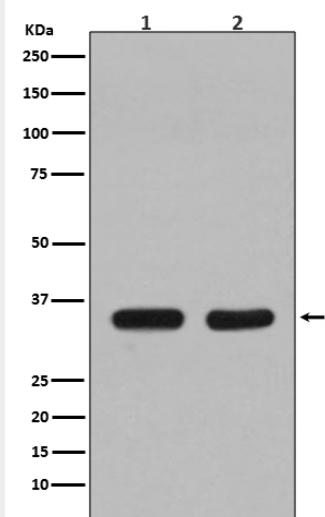
### CDC34 Antibody - Protocols

Provided below are standard protocols that you may find useful for product applications.

- [Western Blot](#)
- [Blocking Peptides](#)
- [Dot Blot](#)
- [Immunohistochemistry](#)
- [Immunofluorescence](#)
- [Immunoprecipitation](#)
- [Flow Cytometry](#)
- [Cell Culture](#)

### CDC34 Antibody - Images





Western blot analysis of CDC34 expression in (1) Jurkat cell lysate; (2) NIH/3T3 cell lysate.