

Phospho-Hsp27 (S78) Antibody
Rabbit mAb
Catalog # AP90958**Specification**

Phospho-Hsp27 (S78) Antibody - Product Information

Application	WB, IHC, ICC, IP
Primary Accession	P04792
Clonality	Monoclonal

Other Names

28 kDa heat shock protein; Estrogen-regulated 24 kDa protein; Growth-related 25 kDa protein; Heat shock 27 kDa protein; HSP 27; HSP25; HSPB1; P25; SRP27; Stress-responsive protein 27;

Isotype	Rabbit IgG
Host	Rabbit
Calculated MW	22783 Da

Phospho-Hsp27 (S78) Antibody - Additional Information

Dilution	WB~~1:1000 IHC~~1:100~500 ICC~~N/A IP~~N/A
Purification	Affinity-chromatography
Immunogen	A synthesized peptide derived from human Phospho-Hsp27 (S78)
Description	Heat shock protein (HSP) 27 is one of the small HSPs that are constitutively expressed at different levels in various cell types and tissues. Like other small HSPs, HSP27 is regulated at both the transcriptional and posttranslational levels. In response to stress, the HSP27 expression increases several-fold to confer cellular resistance to the adverse environmental change.
Storage Condition and Buffer	Rabbit IgG in phosphate buffered saline , pH 7.4, 150mM NaCl, 0.02% sodium azide and 50% glycerol. Store at +4°C short term. Store at -20°C long term. Avoid freeze / thaw cycle.

Phospho-Hsp27 (S78) Antibody - Protein Information**Name** HSPB1**Synonyms** HSP27, HSP28**Function**

Small heat shock protein which functions as a molecular chaperone probably maintaining denatured proteins in a folding- competent state (PubMed:10383393, PubMed:20178975). Plays a role in stress resistance and actin organization (PubMed:19166925). Through its molecular chaperone activity may regulate numerous biological processes including the phosphorylation and the axonal transport of neurofilament proteins (PubMed:23728742).

Cellular Location

Cytoplasm. Nucleus Cytoplasm, cytoskeleton, spindle Note=Cytoplasmic in interphase cells. Colocalizes with mitotic spindles in mitotic cells. Translocates to the nucleus during heat shock and resides in sub-nuclear structures known as SC35 speckles or nuclear splicing speckles.

Tissue Location

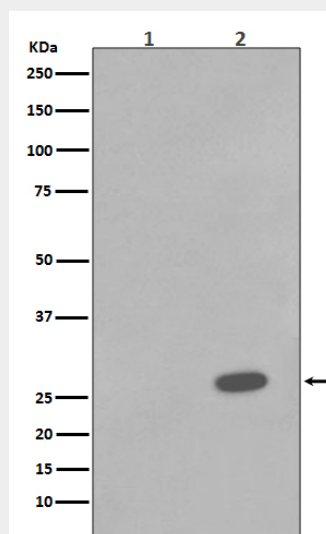
Detected in all tissues tested: skeletal muscle, heart, aorta, large intestine, small intestine, stomach, esophagus, bladder, adrenal gland, thyroid, pancreas, testis, adipose tissue, kidney, liver, spleen, cerebral cortex, blood serum and cerebrospinal fluid. Highest levels are found in the heart and in tissues composed of striated and smooth muscle.

Phospho-Hsp27 (S78) Antibody - Protocols

Provided below are standard protocols that you may find useful for product applications.

- [Western Blot](#)
- [Blocking Peptides](#)
- [Dot Blot](#)
- [Immunohistochemistry](#)
- [Immunofluorescence](#)
- [Immunoprecipitation](#)
- [Flow Cytometry](#)
- [Cell Culture](#)

Phospho-Hsp27 (S78) Antibody - Images



Western blot analysis of Phospho-Hsp27 (S78) expression in (1) A431 cell lysate; (2) A431 cell

lysate treated with Anisomycin.